



www.zlami.eu

WIRING ACCESSORIES

CABLE TIES / 2018-2019





PROFILE

ZLAMI LDA



ZLAMI - manufactures and sells switchboard equipment and accessories under its own trademark "ZLAMI", operating in the power sector and in related markets.

We specialize in voltages up to and including 132 kV.

Our extensive product range is distributed through a network of branches throughout Europe, including our head office in Setubal.

New branches through Europe as a sales, storage and distribution warehouses to take advantage of growing demand from customers, providing access to the ZLAMI product range and providing the highest level of service in the Eurozone. Network allows us to deliver a huge range of products quickly, with hundreds of thousands of items available for next day delivery.

In addition to our nationwide branch network, ZLAMI has a huge range of products available for online purchase, allowing you to conveniently order the products you need at any time, while receiving the European quality products for which ZLAMI is known.

ZLAMI has comprehensive distribution agreements with the most trusted brands in the electrical grid, which means that we are in a unique position to supply competitively priced low/medium/high voltage products that are approved for use in European Union electrical infrastructure.

These market-leading products come in the following major groups:

Data Centers

Gas industry

Independent Interconnection Providers (ICP)

Petroleum Industry

Petrochemicals

Electricity Distribution

Power Generation

Power transmission

Power Supply

Electrification of railroads

Renewable energy

Private grid projects across the country.

The product line was originally designed to produce switchboard accessories, but has now expanded to include:

Cable clamps

Cable glands

Cable lugs, splices and connectors

Cable protection

Cable pulling equipment

Cable ties and marking systems

Cable jumpers

Cable hardening

Fasteners and fasteners

Heat and Cold Shrink Products

The ZLAMI team prides itself on excellent customer service, extensive inventory, and unmatched technical expertise.

Accessories for High Voltage Cables

Insulation Products

Low Voltage Connections

Consumables for the Power Industry

Tape

Tools and Equipment

Panel equipment

Safety Switches

Low voltage equipment

High Voltage Products

www.zlami.eu

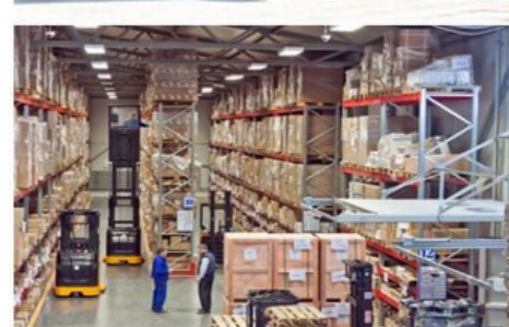
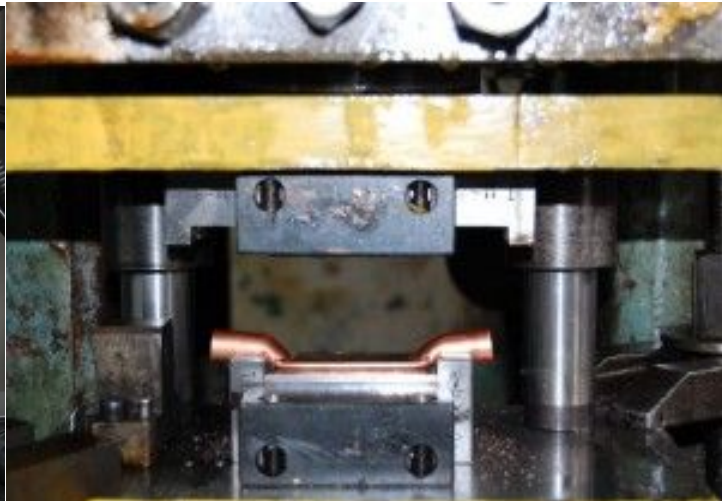


BEG THE MANAGEMENT OF SOLID AND CREATIVE LASTING

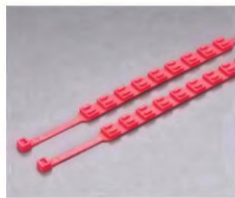
With the modern business enterprise principle of management develop entity, expand the space.
21 century business enterprise competition, concentrate on the talented person, management and funds, etc.
Changhong plastics enterprise insist the capital management, the market lead to, scientific management.
The legal system escort,
pursue solid and innovative, lasting management.

ZLAEMI





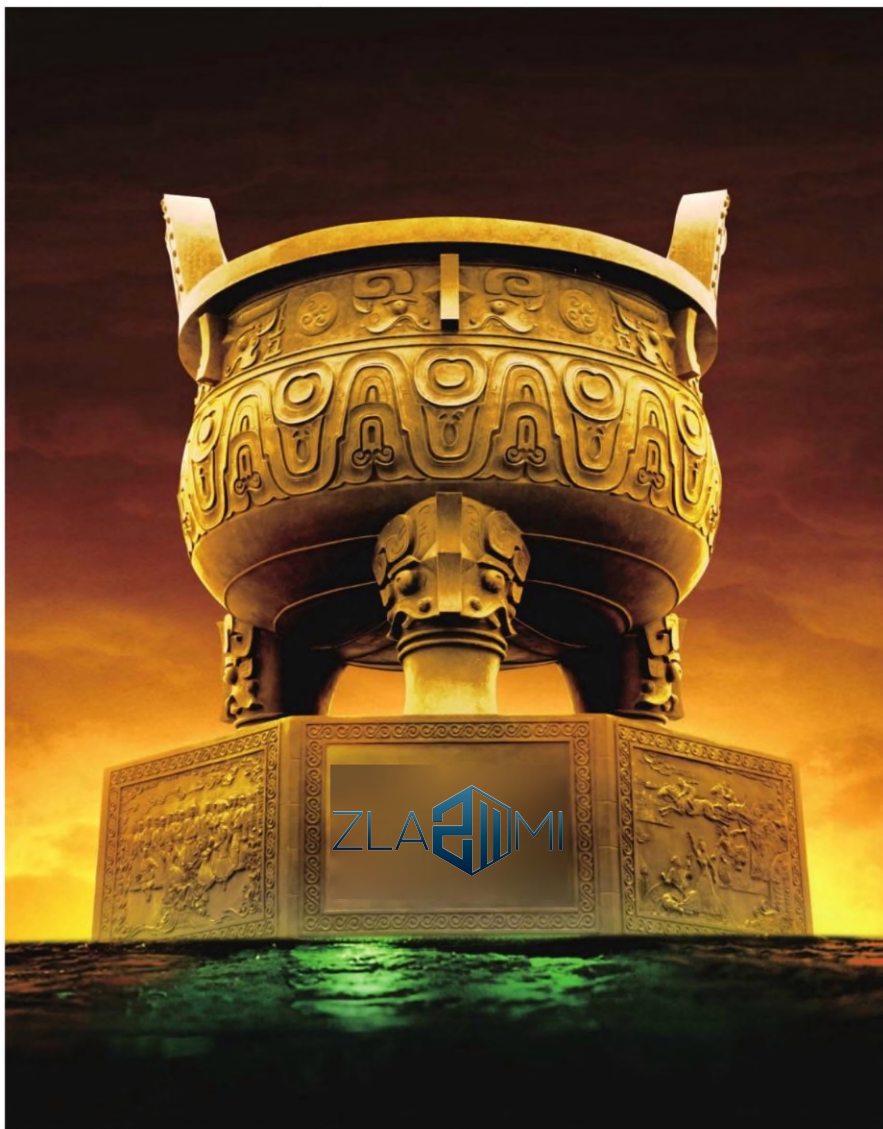
INDEX



ZLAMI



INTEGRITY AND CREDIBILITY WIN TRUST



ZLAEI MI

A Cable Ties

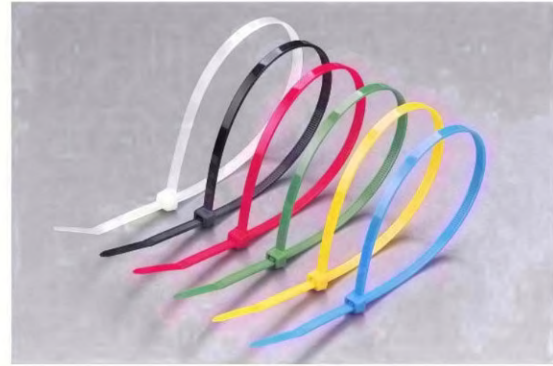


Living on quality, Developing on credit.

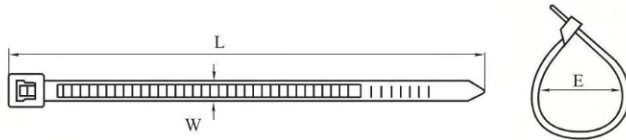
Cable Ties

Self-locking Nylon Cable Ties

- ◆ Material: Nylon 66, 94V-2 certified by UL. Acid & erosion control, insulate well and not apt to age. Heat-resistant, weather-resistant are available.
- ◆ Operating temperature: -35°C to 85°C.
- ◆ Color: Natural (or white, standard color), UV black and other colors are available as requested.



Underwriters
Laboratories Inc.
File E 359184



- * W=White & Natural
- BR=Brown
- OR=Orange
- GN=Green
- PP=Purple
- B=Black
- RD=Red
- YL=Yellow
- BL=Blue
- GY=Gray

Item NO.	L		W (mm)	Max. Bundle Dia. E (mm)	Min. loop Tensile Strength	
	Inch	mm			LBS	KGS
ZLM2560SLNCT	2 3/8"	60	2.5	11	18	8
ZLM2580SLNCT	3 3/16"	80	2.5	16	18	8
ZLM2590SLNCT	3 5/8"	90	2.5	18	18	8
ZLM25100SLNCT	4"	100	2.5	22	18	8
ZLM25120SLNCT	4 3/4"	120	2.5	28	18	8
ZLM25140SLNCT	5 1/2"	140	2.5	33	18	8
ZLM25150SLNCT	6"	150	2.5	35	18	8
ZLM25160SLNCT	6 1/4"	160	2.5	40	18	8
ZLM25200SLNCT	8"	200	2.5	53	18	8
ZLM25250SLNCT	10"	250	2.5	65	18	8
ZLM36100SLNCT	4"	100	3.6	22	40	18
ZLM36120SLNCT	4 3/4"	120	3.6	30	40	18
ZLM36140SLNCT	5 1/2"	140	3.6	33	40	18
ZLM36150SLNCT	6"	150	3.6	35	40	18
ZLM36180SLNCT	7"	180	3.6	44	40	18
ZLM36200SLNCT	8"	200	3.6	53	40	18
ZLM36220SLNCT	8 5/8"	220	3.6	58	40	18
ZLM36250SLNCT	10"	250	3.6	65	40	18
ZLM36280SLNCT	11"	280	3.6	70	40	18
ZLM36300SLNCT	11 5/8"	300	3.6	80	40	18
ZLM36370SLNCT	14 1/2"	370	3.6	102	40	18
ZLM46120SLNCT	4 3/4"	120	4.6	26	50	22
ZLM48160SLNCT	6 1/4"	160	4.8	39	50	22
ZLM46180SLNCT	7"	180	4.6	46	50	22
ZLM46190SLNCT	7 1/2"	190	4.6	48	50	22

Cable Ties



Item NO.	L		W (mm)	Max.Bundle Dia. E (mm)	Min.loop Tensile Strength	
	Inch	mm			LBS	KGS
ZLM48200SLNCT	8"	200	4.8	53	50	22
ZLM48250SLNCT	10"	250	4.8	65	50	22
ZLM48280SLNCT	11"	280	4.8	70	50	22
ZLM48300SLNCT	11 5/8"	300	4.8	82	50	22
ZLM48350SLNCT	13 3/4"	350	4.8	90	50	22
ZLM48380SLNCT	15"	380	4.8	105	50	22
ZLM48400SLNCT	15 3/4"	400	4.8	108	50	22
ZLM48430SLNCT	17"	430	4.8	115	50	22
ZLM48450SLNCT	17 3/4"	450	4.8	130	50	22
ZLM48500SLNCT	19 11/16"	500	4.8	150	50	22
ZLM68150SLNCT	6"	150	6.8	33	85	38
ZLM68180SLNCT	7"	180	6.8	42	85	38
ZLM68200SLNCT	8"	200	6.8	50	85	38
ZLM68250SLNCT	10"	250	6.8	65	85	38
★ NEW ZLM70370SLNCT	14 1/2"	370	7.0	98	85	38
ZLM76200SLNCT	8"	200	7.6	50	120	55
ZLM76250SLNCT	10"	250	7.6	63	120	55
ZLM76300SLNCT	11 5/8"	300	7.6	80	120	55
ZLM76350SLNCT	13 3/4"	350	7.6	90	120	55
ZLM76370SLNCT	14 1/4"	370	7.6	98	120	55
ZLM76400SLNCT	15 3/4"	400	7.6	105	120	55
ZLM76450SLNCT	17 3/4"	450	7.6	125	120	55
ZLM76500SLNCT	19 11/16"	500	7.6	145	120	55
ZLM76550SLNCT	21 1/16"	550	7.6	160	120	55
ZLM76600SLNCT	23 5/8"	600	7.6	170	120	55
ZLM76650SLNCT	25 9/16"	650	7.6	190	120	55
ZLM76750SLNCT	29 9/16"	750	7.6	220	120	55
★ NEW ZLM90200SLNCT	8"	200	9.0	50	175	80
★ NEW ZLM90300SLNCT	11 5/8"	300	9.0	78	175	80
ZLM90450SLNCT	17 3/4"	450	9.0	120	175	80
ZLM90530SLNCT	20 3/4"	530	9.0	150	175	80
ZLM90550SLNCT	21 1/16"	550	9.0	160	175	80
ZLM90600SLNCT	23 5/8"	600	9.0	170	175	80
ZLM90650SLNCT	25 9/16"	650	9.0	190	175	80
ZLM90700SLNCT	27 1/2"	700	9.0	205	175	80
ZLM90760SLNCT	30"	760	9.0	225	175	80
★ NEW ZLM90812SLNCT	32"	812	9.0	243	175	80
ZLM90920SLNCT	36 1/4"	920	9.0	265	175	80
ZLM901020SLNCT	40 1/6"	1020	9.0	295	175	80
ZLM901150SLNCT	45 1/4"	1150	9.0	310	175	80
ZLM901210SLNCT	48"	1210	9.0	340	175	80
ZLM901350SLNCT	53"	1350	9.0	380	175	80
ZLM901550SLNCT	61"	1550	9.0	470	175	80
ZLM100450SLNCT	17 3/4"	450	10.0	125	200	91
ZLM100500SLNCT	19 11/16"	500	10.0	145	200	91
ZLM127300SLNCT	11 5/8"	300	12.7	80	250	114
ZLM127400SLNCT	15 3/4"	400	12.7	105	250	114
ZLM127540SLNCT	21 1/4"	540	12.7	155	250	114
ZLM120650SLNCT	25 9/16"	650	12.0	190	250	114
ZLM120750SLNCT	29 9/16"	750	12.0	220	250	114
ZLM127750SLNCT	30 3/4"	780	12.7	230	250	114
★ NEW ZLM1201000SLNCT	39 3/8"	1000	12.0	275	250	114
ZLM130540SLNCT	21 1/4"	540	13.0	155	250	114

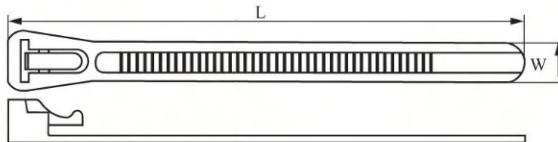
Cable Ties

Item NO.	L		W (mm)	Max.Bundle Dia. E (mm)	Min.loop Tensile Strength	
	Inch	mm			LBS	KGS
ZLM18100CT	4"	100	1.8	22	14	6.5
ZLM19120CT	4 3/4"	120	1.9	28	14	6.5
ZLM19150CT	6"	150	1.9	35	14	6.5
ZLM20200CT	8"	200	2.0	50	14	6.5
ZLM2260CT	2 3/8"	60	2.2	11	18	8
ZLM2280CT	3 3/16"	80	2.2	18	18	8
ZLM22100CT	4"	100	2.2	22	18	8
ZLM22120CT	4 3/4"	120	2.2	28	18	8
ZLM22150CT	6"	150	2.2	35	18	8
ZLM22200CT	8"	200	2.2	50	18	8
ZLM29150CT	6"	150	2.9	35	33	15
ZLM29200CT	8"	200	2.9	50	33	15
ZLM27250CT	10"	250	2.7	65	33	15
ZLM29300CT	11 5/8"	300	2.9	80	33	15
ZLM32150CT	6"	150	3.2	35	40	18
ZLM32180CT	7"	180	3.2	42	40	18
ZLM32200CT	8"	200	3.2	50	40	18
ZLM32250CT	10"	250	3.2	65	40	18
ZLM32300CT	11 5/8"	300	3.2	80	40	18
ZLM37350CT	13 3/4"	350	3.7	90	40	18
ZLM37400CT	15 3/4"	400	3.7	108	40	18
ZLM42180CT	7"	180	4.2	42	50	22
ZLM42200CT	8"	200	4.2	50	50	22
ZLM42250CT	10"	250	4.2	65	50	22
ZLM42300CT	11 5/8"	300	4.2	80	50	22
ZLM42350CT	13 3/4"	350	4.2	90	50	22
ZLM42380CT	15"	380	4.2	102	50	22
ZLM42400CT	15 3/4"	400	4.2	105	50	22
ZLM52180CT	7"	180	5.2	42	65	30
ZLM52200CT	8"	200	5.2	50	65	30
ZLM52250CT	10"	250	5.2	65	65	30
ZLM52300CT	11 5/8"	300	5.2	80	65	30
ZLM55350CT	13 3/4"	350	5.5	90	65	30
ZLM55400CT	15 3/4"	400	5.5	105	65	30
ZLM55500CT	19 11/16"	500	5.5	150	65	30
ZLM60270CT	10 5/8"	270	6.0	65	65	30
ZLM65250CT	10"	250	6.5	65	85	38
ZLM65300CT	11 5/8"	300	6.5	80	85	38
ZLM65350CT	13 3/4"	350	6.5	90	85	38
ZLM65400CT	15 3/4"	400	6.5	105	85	38
ZLM65450CT	17 3/4"	450	6.5	125	85	38
ZLM65500CT	19 11/16"	500	6.5	145	85	38

Cable Ties

Releasable Cable Ties

- ◆ Material: Nylon 66, 94V-2 certified by UL. Heat-resisting, Acid & erosion control, insulate well and not apt to age.
- ◆ Usage: releasable

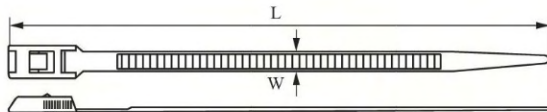


TYPE A

Item NO.	L		W mm	Max.Bundle DIA.(mm)	Tensile Strength	
	Inch	mm			LBS	KGS
ZLM75150RAT	6"	150	7.5	35	50	22
ZLM75200RAT	8"	200	7.5	45	50	22
★ NEW ZLM46202RAT	8"	200	4.6	45	50	22
ZLM75250RAT	10"	250	7.5	60	50	22
ZLM75300RAT	12"	300	7.5	75	50	22
★ NEW ZLM75370RAT	14 1/4"	370	7.5	95	50	22
★ NEW ZLM75400RAT	15 3/4"	400	7.5	100	50	22
ZLM85505RAT	19 11/16"	500	8.5	140	75	34

Releasable Cable Ties

- ◆ Material: Nylon 66, 94V-2 certified by UL. Heat-resisting, Acid & erosion control, insulate well and not apt to age.
- ◆ Usage: releasable



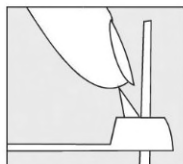
TYPE B

Item NO.	L		W mm	Max.Bundle DIA.(mm)	Tensile Strength	
	Inch	mm			LBS	KGS
ZLM80350RBCT	13 5/8"	350	8.0	90	50	22
ZLM80400RBCT	15 3/4"	400	8.0	105	50	22
ZLM80450RBCT	17 3/4"	450	8.0	118	50	22
★ NEW ZLM95490RBCT	19 1/3"	490	9.5	135	65	30
ZLM90500RBCT	19 11/16"	500	9.0	150	65	30

Cable Ties

Releasable Cable Ties

- ◆ Material: Nylon 66, 94V-2 certificated by UL. Heat-resisting, Acid & erosion control, insulate well and not apt to age.
- ◆ Usage: releasable

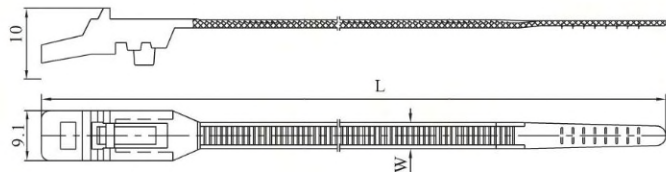


TYPE C

Item NO.	L		W mm	Max.Bundle DIA.(mm)	Tensile Strength	
	Inch	mm			LBS	KGS
ZLM25100CRKWT	4"	100	2.5	22	18	8
ZLM35150CRKWT	6"	150	3.5	35	40	18

Releasable Cable Ties (double Loop)

- ◆ Material: Nylon 66, 94V-2 certificated by UL. Heat-resisting, Acid & erosion control, insulate well and not apt to age.
- ◆ Usage: releasable



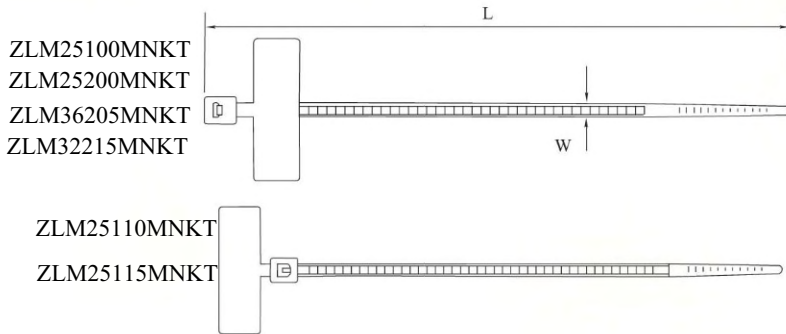
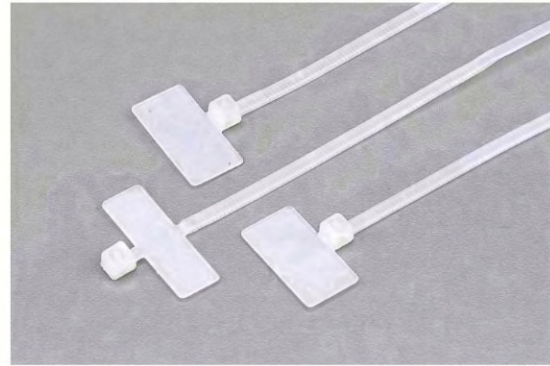
TYPE D

Item NO.	L (mm)	W (mm)	Bundle Diameter E (mm)	Min.loop Tensile Strength	
				LBS	KGS
ZLM48280DRKLT	280	4.8	8-60	40	18

Cable Ties

Marker Nylon Cable Ties

- ◆ Material: Nylon 66, 94V-2 certificated by UL. Heat-resisting, Acid & erosion control, insulate well and not apt to age.
- ◆ Feature: It is easy to mark on the space at front tip of ties with oil pen.

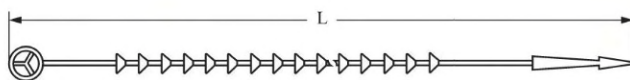
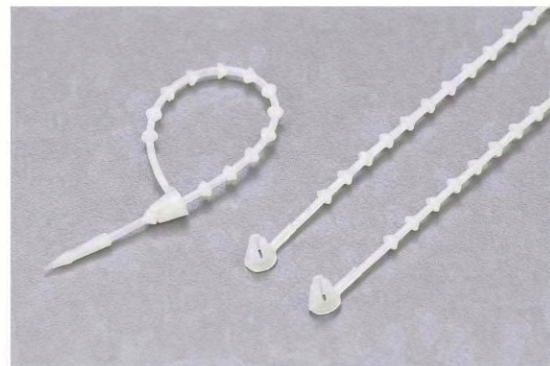


Item NO.	L		W (mm)	Tensile Strength		Sticker Size
	Inch	mm		LBS	KGS	
ZLM25100MNKT	4"	100	2.5	18	8.0	25 × 8
ZLM25200MNKT	8"	200	2.5	18	8.0	25 × 8
ZLM36205MNKT	8 1/16"	205	3.6	40	18.0	25 × 8
★ NEW ZLM32215MNKT	8 1/2"	215	3.2	40	18.0	25 × 15

Item NO.	L		W (mm)	Tensile Strength		Sticker Size
	Inch	mm		LBS	KGS	
ZLM25110MNKT	4 1/3"	110	2.5	18	8.0	21 × 10
★ NEW ZLM25115MNKT	4 1/2"	115	2.5	18	8.0	27 × 13

Bead Ties

- ◆ Material: Nylon 66, 94V-2 certificated by UL. Heat-resisting, Acid & erosion control, insulate well and not apt to age.

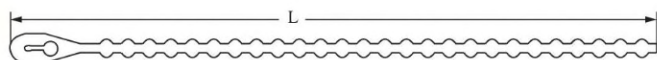


Item NO.	L		Max.Bundle DIA.(mm)	Tensile Strength	
	Inch	mm		LBS	KGS
ZLM4"100BT	4"	100	20	11	5.0

Cable Ties

Knot Ties

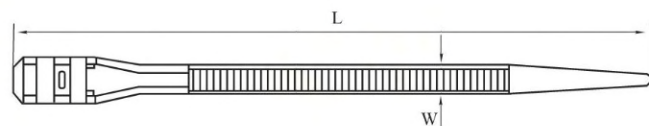
- ◆ Material: Nylon 66, 94V-2 certificated by UL. Heat-resisting, Acid & erosion control, insulate well and not apt to age.
- ◆ Usage: releasable.



Item NO.	L		Max.Bundle DIA.(mm)	Tensile Strength	
	Inch	mm		LBS	KGS
ZLM4"120CTKT	4 3/4"	120	25	18	8
ZLM6"150CTKT	6"	150	35	18	8
ZLM7"180CTKT	7"	180	45	18	8

Double Locking Cable Ties

- ◆ Material: Nylon 12 or Nylon 66 certificated by UL.
- ◆ Usage: double locking, strong supporting capacity.

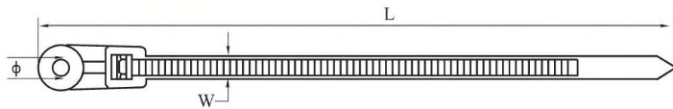


Item NO.	L		W (mm)	Max.Bundle DIA.(mm)	Tensile Strength	
	Inch	mm			PA12(KGS)	PA66(KGS)
ZLM60115DLCT	5 1/8"	115	6.0	22	18	35
ZLM60180DLCT	7"	180	6.0	45	18	35
ZLM90180DLCT	7"	180	9.0	45	25	40
ZLM90260DLCT	10 1/4"	260	9.0	66	40	50
ZLM90350DLCT	13 5/8"	350	9.0	90	40	50

Cable Ties

Mountable Head Ties

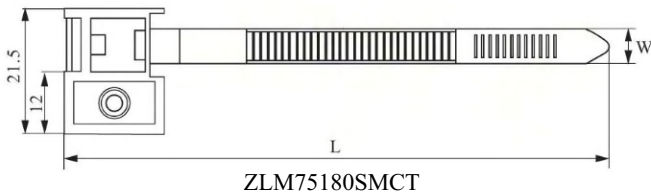
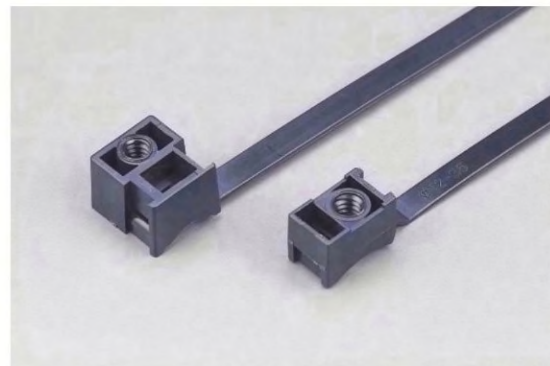
- ◆ Material: Nylon 66, 94V-2 certificated by UL. Heat-resisting, Acid & erosion control, insulate well and not apt to age.
- ◆ Usage: after bundling wires, fix them on plate with screw.



Item NO.	L		W (mm)	Max.Bundle DIA.(mm)	Hole Dia.(mm)	Tensile Strength	
	Inch	mm				LBS	KGS
ZLM36100MHCT	4 1/3"	100	3.6	22	4.5	18	8.0
ZLM36145MHCT	6"	145	3.6	32	4.5	30	13.6
ZLM43220MHCT	8"	220	4.3	42	5.5	50	22
ZLM76381MHCT	15"	381	7.6	98	6.2	120	55

Saddle Mounting Ties

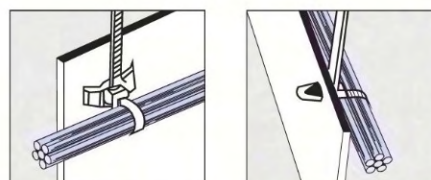
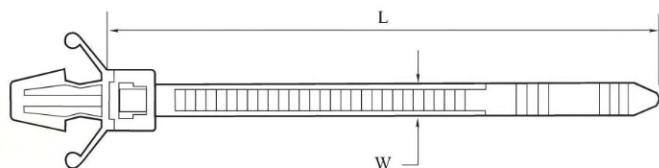
- ◆ Material: Nylon 66, 94V-2 certificated by UL. Heat-resisting, Acid & erosion control, insulate well and not apt to age.



Item NO.	L		W (mm)	Max.Bundle DIA.(mm)	Tensile Strength	
	Inch	mm			LBS	KGS
ZLM75165SMCT	6 1/2"	165	7.5	33	50	22
ZLM75180SMCT	7"	180	7.5	38	50	22

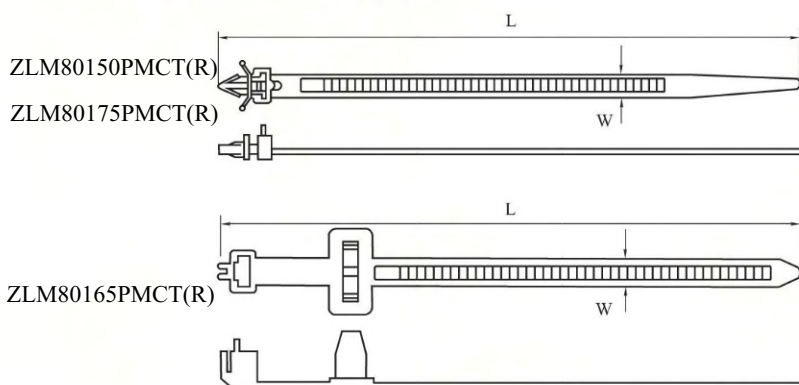
Push Mount Ties

- ◆ Material: Nylon 66, 94V-2 certificated by UL. Heat-resisting, Acid & erosion control, insulate well and not apt to age.
- ◆ Usage: insert tie to the hole of table and tighten it.



Item NO.	L		W (mm)	Max.Bundle DIA.(mm)	Tensile Strength		Hole Dia.		Panel Thickness	
	Inch	mm			LBS	KGS	Inch	mm	Inch	mm
ZLM25100PMCT	4"	100	2.5	22	18	8.0	0.189	4.8	0.094	2.4
ZLM32120PMCT	4 3/4"	120	3.2	25	30	13.6	0.157	4.0	0.079	2.0
ZLM48120PMCT	4 3/4"	120	4.8	25	50	22.0	0.252	6.4	0.126	3.2
ZLM35123PMCT	4 4/5"	123	3.5	26	40	18.00	0.157	4.0	0.079	2.0
ZLM48160PMCT	6 1/4"	160	4.8	38	50	22.0	0.252	6.4	0.126	3.2
ZLM48190PMCT	7 1/2"	190	4.8	45	50	22.0	0.252	6.4	0.126	3.2

Push Mount Ties (Releasable)

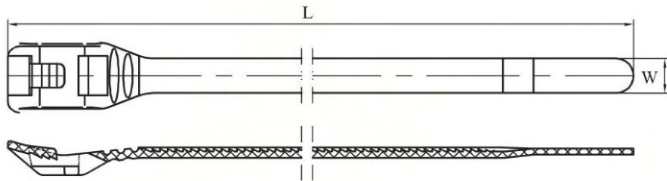


Item NO.	L		W (mm)	Max.Bundle DIA.(mm)	Tensile Strength		Hole Dia.		Panel Thickness	
	Inch	mm			LBS	KGS	Inch	mm	Inch	mm
ZLM80150PMCT(R)	6"	150	8.0	37	40	18	0.252	6.4	0.126	3.2
ZLM80175PMCT(R)	6 5/8"	175	8.0	44	40	18	0.252	6.4	0.126	3.2
ZLM80165PMCT(R)	6 1/2"	165	8.0	38	40	18	0.394	10.0	0.126	3.2

Cable Ties

In-line Cable Ties

- ◆ Material: Nylon 66, 94V-2 certificated by UL. Heat-resisting, Acid & erosion control, insulate well and not apt to age.



Item NO.	L		W (mm)	Bundle Diameter E (mm)	Min.loop Tensile Strength	
	Inch	mm			LBS	KGS
ZLM45200ILCT	8"	200	4.5	8-45	50	22
ZLM45280ILCT	11"	280	4.5	8-65	50	22

Stainless Steel Plate Lock Cable Tie

- ◆ Material: Nylon 66, 94V-2 certificated by UL. Heat-resisting, Acid & erosion control, insulate well and not apt to age.
- ◆ Usage: Stainless-steel sheet in the head, tensile strength bigger than standard nylon cable tie.



Item NO.	L		W (mm)	Max.Bundle Dia. E (mm)	Min.loop Tensile Strength	
	Inch	mm			LBS	KGS
ZLM30100SSPLCT	4"	100	3.0	25	22	10
ZLM40150SSPLCT	6"	150	4.0	35	44	20
ZLM40200SSPLCT	8"	200	4.0	50	44	20
ZLM50250SSPLCT	10"	250	5.0	65	55	25
ZLM50300SSPLCT	12"	300	5.0	80	55	25
ZLM80145SSPLCT	5 3/4"	145	8.0	32	130	60
ZLM80175SSPLCT	7"	175	8.0	42	130	60
ZLM80200SSPLCT	8"	200	8.0	50	130	60
ZLM80240SSPLCT	9 1/2"	240	8.0	56	130	60
ZLM80300SSPLCT	12"	300	8.0	80	130	60
ZLM80400SSPLCT	15 3/4"	400	8.0	100	130	60
ZLM100300SSPLCT	12"	300	10.0	80	200	90
ZLM100350SSPLCT	14"	350	10.0	90	200	90
ZLM100400SSPLCT	15 3/4"	400	10.0	105	200	90
ZLM100450SSPLCT	17 3/4"	450	10.0	115	200	90
ZLM100500SSPLCT	17 11/16"	500	10.0	150	200	90
ZLM100600SSPLCT	23 5/8"	600	10.0	170	200	90

Cable Ties

Stainless Steel Cable Ties

- ◆Material:Stainless steel type: 201,304,316, all length are available,special sizes can be customized;
- ◆Characteristic:Acid-resisting, anti-corrosion, high tensile strength,simple and easy to use, etc.
- ◆Working temperature:-60℃-150℃

Stainless Steel Epoxy Coated Cable Ties



- ◆Material: Stainless steel type: 201,304,316, thermosetting epoxy resin coated, all length are available, special sizes can be customized;
- ◆Characteristic: Acid-resisting, anti-corrosion, unflammmable, high tensile strength; Unique locking structure(with a small ball) makes it simple and easy to use and can't be unlock.
- ◆Operating temperature:-40℃-85℃

Item NO.		L mm	W mm	Max.bundle Dia.(mm)	Tensile Strength	
					LBS	KGS
ZLM46100SSECCT	ZLM46100SSECCTP	100	4.6	22	135	60
ZLM46152SSECCT	ZLM46152SSECCTP	152	4.6	35	135	60
ZLM46175SSECCT	ZLM46175SSECCTP	175	4.6	40	135	60
ZLM46200SSECCT	ZLM46200SSECCTP	200	4.6	50	135	60
ZLM46250SSECCT	ZLM46250SSECCTP	250	4.6	65	135	60
ZLM46300SSECCT	ZLM46300SSECCTP	300	4.6	80	135	60
ZLM46360SSECCT	ZLM46360SSECCTP	360	4.6	95	135	60
ZLM46400SSECCT	ZLM46400SSECCTP	400	4.6	105	135	60
ZLM46520SSECCT	ZLM46520SSECCTP	520	4.6	150	135	60
ZLM46600SSECCT	ZLM46600SSECCTP	600	4.6	180	135	60
ZLM46680SSECCT	ZLM46680SSECCTP	680	4.6	195	135	60
ZLM46840SSECCT	ZLM46840SSECCTP	840	4.6	250	135	60
ZLM461050SSECCT	ZLM461050SSECCTP	1050	4.6	285	135	60
ZLM79152SSECCT	ZLM79152SSECCTP	152	7.9	35	180	80
ZLM79175SSECCT	ZLM79175SSECCTP	175	7.9	40	180	80
ZLM79200SSECCT	ZLM79200SSECCTP	200	7.9	50	180	80
ZLM79250SSECCT	ZLM79250SSECCTP	250	7.9	65	180	80
ZLM79300SSECCT	ZLM79300SSECCTP	300	7.9	80	180	80
ZLM79360SSECCT	ZLM79360SSECCTP	360	7.9	95	180	80
ZLM79400SSECCT	ZLM79400SSECCTP	400	7.9	105	180	80
ZLM79520SSECCT	ZLM79520SSECCTP	520	7.9	150	180	80
ZLM79600SSECCT	ZLM79600SSECCTP	600	7.9	180	180	80
ZLM79680SSECCT	ZLM79680SSECCTP	680	7.9	195	180	80
ZLM79840SSECCT	ZLM79840SSECCTP	840	7.9	250	180	80
ZLM791050SSECCT	ZLM791050SSECCTP	1050	7.9	285	180	80
ZLM120152SSECCT	ZLM120152SSECCTP	152	12	35	270	120
ZLM120175SSECCT	ZLM120175SSECCTP	175	12	40	270	120
ZLM120200SSECCT	ZLM120200SSECCTP	200	12	50	270	120
ZLM120250SSECCT	ZLM120250SSECCTP	250	12	65	270	120
ZLM120300SSECCT	ZLM120300SSECCTP	300	12	80	270	120
ZLM120360SSECCT	ZLM120360SSECCTP	360	12	95	270	120
ZLM120400SSECCT	ZLM120400SSECCTP	400	12	105	270	120
ZLM120520SSECCT	ZLM120520SSECCTP	520	12	150	270	120
ZLM120600SSECCT	ZLM120600SSECCTP	600	12	180	270	120
ZLM120680SSECCT	ZLM120680SSECCTP	680	12	195	270	120
ZLM120840SSECCT	ZLM120840SSECCTP	840	12	250	270	120
ZLM1201050SSECCT	ZLM1201050SSECCTP	1050	12	285	270	120

★ NEW

Stainless Steel Cable Ties-Multi Lock Type



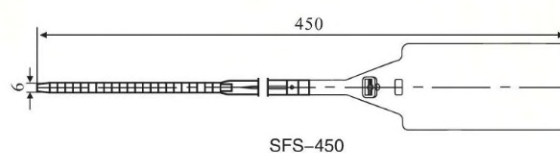
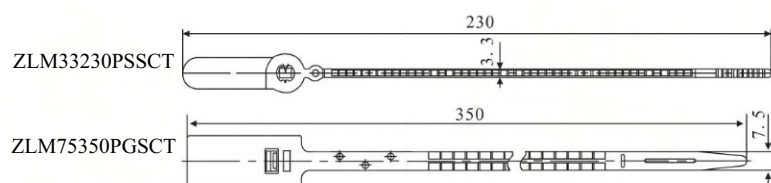
- ◆ Material: High corrosion resistant, Multi-lock type.
Good loop tensile strength can touch 250Lbs.
Manufactured from type 304 and 316 Stainless steel.
Ideal for used in telecommunication, electricity, shipbuilding and oil & gas industry.
- ◆ Characteristic: Acid-resisting, anti-corrosion, high tensile strength, simple and easy to use, etc.
- ◆ Working temperature: -60°C-150°C

Item NO.	L mm	W mm	Max.bundle Dia.(mm)	Tensile Strength	
				LBS	KGS
ZLM70150SSTMLCT	150	7.0	33	400	180
ZLM70225SSTMLCT	225	7.0	57	400	180
ZLM70300SSTMLCT	300	7.0	81	400	180
ZLM70335SSTMLCT	335	7.0	92	400	180
ZLM70400SSTMLCT	400	7.0	113	400	180
ZLM70450SSTMLCT	450	7.0	129	400	180
ZLM70490SSTMLCT	490	7.0	141	400	180
ZLM70550SSTMLCT	550	7.0	161	400	180
ZLM70600SSTMLCT	600	7.0	176	400	180
ZLM70650SSTMLCT	650	7.0	192	400	180
ZLM70700SSTMLCT	700	7.0	208	400	180
ZLM70750SSTMLCT	750	7.0	224	400	180
ZLM70800SSTMLCT	800	7.0	240	400	180
ZLM120150SSTMLCT	150	12.0	33	800	360
ZLM120225SSTMLCT	225	12.0	57	800	360
ZLM120300SSTMLCT	300	12.0	81	800	360
ZLM120335SSTMLCT	335	12.0	92	800	360
ZLM120400SSTMLCT	400	12.0	113	800	360
ZLM120450SSTMLCT	450	12.0	129	800	360
ZLM120490SSTMLCT	490	12.0	141	800	360
ZLM120550SSTMLCT	550	12.0	161	800	360
ZLM120600SSTMLCT	600	12.0	176	800	360
ZLM120650SSTMLCT	650	12.0	192	800	360
ZLM120700SSTMLCT	700	12.0	208	800	360
ZLM120750SSTMLCT	750	12.0	224	800	360
ZLM120800SSTMLCT	800	12.0	240	800	360

Cable Ties

Plastic Security Seals

- ◆ Material: Nylon 66, 94V-2 certificated by UL. Heat-resisting, Acid & erosion control, insulate well and not apt to age.
- ◆ Apply to financial services, shipping, electricity, container and other industries.
- ◆ Customer name, trademark, date, serial number etc. are allowed to be printed on the marker.



Item NO.	L (mm)	W (mm)	Max.bundle Dia.(mm)	Sticker Size(mm)
ZLM33230PSSCT	230	3.3	42	12 x 30
ZLM75350PGSCT	350	7.5	70	20 x 45
ZLM90450SFSCT	450	9	66	55 x 106

Magic Cable Ties

- ◆ Material: Female side is made of PP, male side is made of Nylon.
- ◆ Application: Resusable; suitable for bundling LAN cable(UTP/STP/Fiber), signal line, power line, avoiding the transmission rate effected by nylon cable tie of tightening too much.



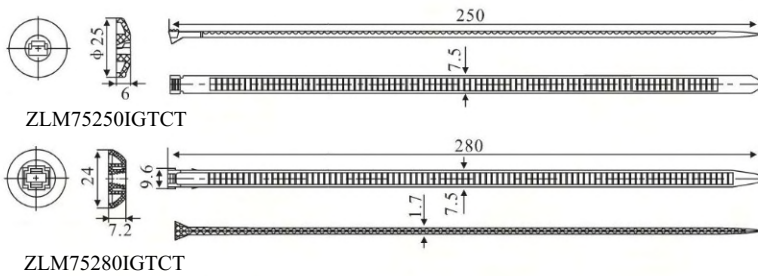
Item NO.	L mm	W mm	Max. Bundle Dia (mm)	Remark
ZLM12125MGCT	125	12	30	Other size are available as requested.
ZLM12135MGCT	135	12	33	
ZLM12150MGCT	150	12	35	
ZLM12180MGCT	180	12	40	
ZLM16210MGCT	210	16	50	
ZLM16250MGCT	250	16	65	
ZLM16310MGCT	310	16	85	
ZLM16400MGCT	400	16	105	
ZLM16500MGCT	500	16	145	

Cable Ties

Infinity Ties



- ◆ Description: Two-piece design, Buckle and strap are one assembly. Zero insertion force. First loop is releasable prior to final tensioning.
- ◆ Material: Nylon 66, 94V-2 certificated by UL. Heat-resisting, Acid & erosion control, insulate well and not apt to age.

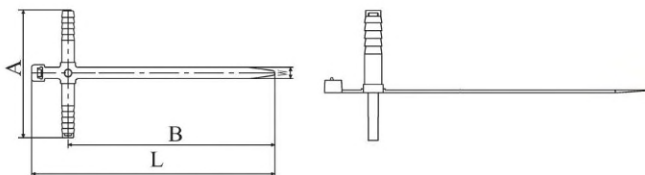


Item NO.	L (mm)	W (mm)	Max.bundle Dia. (mm)	Tensile Strength		Remark
				LBS	KGS	
ZLM75250IGTCT	250	7.5	60	120	55	Single Tooth
ZLM75280IGTCT	280	7.5	65	130	60	Double Tooth

Expand Plug Cable Ties



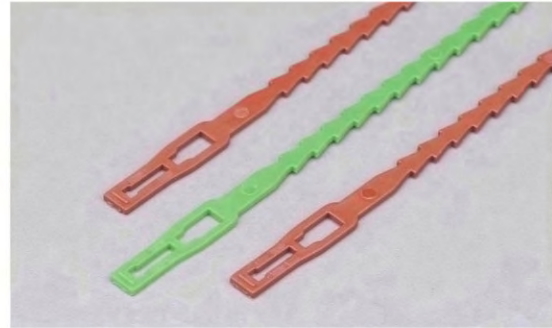
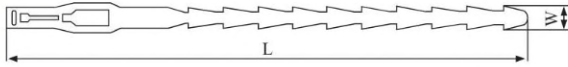
- ◆ Material: Nylon 66, 94V-2 certificated by UL. Heat-resisting, Acid & erosion control, insulate well and not apt to age.
- ◆ Usage: Can insert the head (Expand plug) into wall, easy to use.



Item NO.	L		W (mm)	A (mm)	B (mm)	Max.bundle Dia. (mm)	Min.loop Tensile Strength	
	Inch	mm					LBS	KGS
ZLM6"150EPCT	6"	150	7	79	128	35	85	38

PE Ties

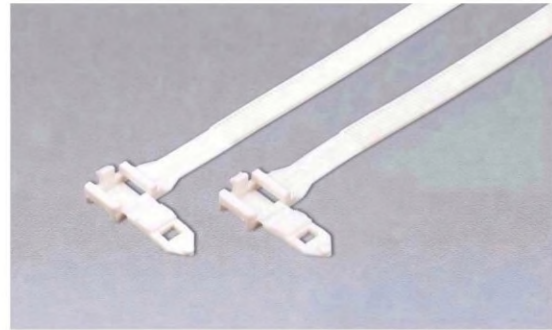
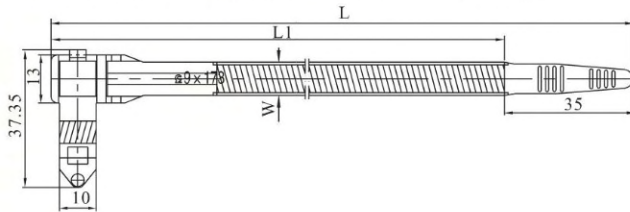
- ◆ Description: Application in garden, easy to install. Release and reusable.
- ◆ Material: PE.
- ◆ Color: All colors are available.



Item NO.	Length (mm)	Width (mm)	Thickness (mm)
ZLM54170PECT	170	5.4	1.5

Buckle Cable Ties

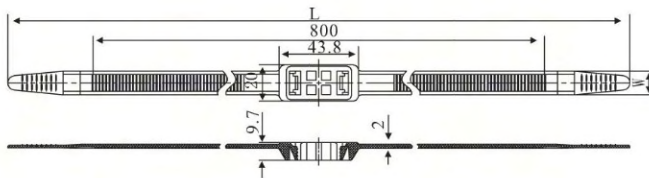
- ◆ Material: Nylon 12, 94V-2 certificated by UL. Heat-resisting, Acid & erosion control, insulate well and not apt to age.



Item NO.	L (mm)	L1 (mm)	W (mm)	Max.bundle Dia.(mm)	Min.loop Tensile Strength	
					LBS	KGS
ZLM193158935BCT	193	158	9	35	175	80
ZLM208173940BCT	208	173	9	40		
ZLM250215952BCT	250	215	9	52		
ZLM286251963BCT	286	251	9	63		
ZLM376341985BCT	376	341	9	85		

Handcuffs Tie

- ◆ Material: Nylon 66.
- ◆ Features: Handcuff design, substitute for iron handcuff.

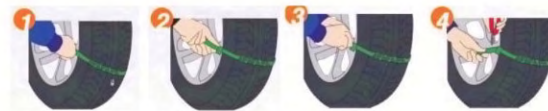
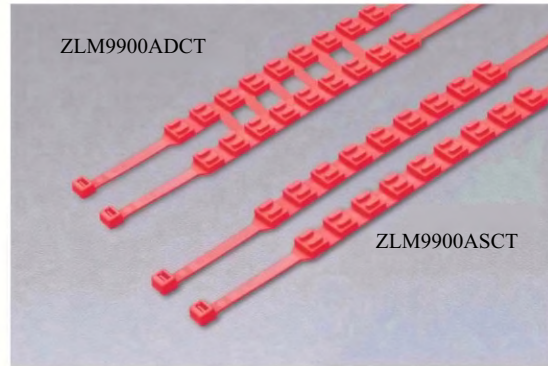
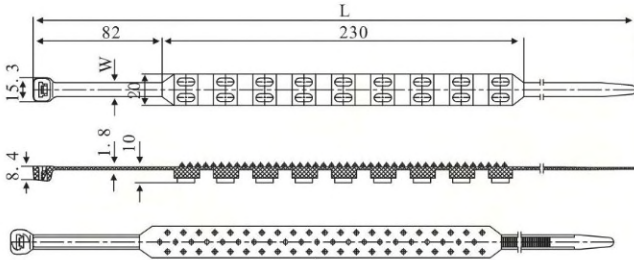


Item NO.	L (mm)	W (mm)	Max.Bundle DIA.(mm)	Min.loop Tensile Strength	
				LBS	KGS
ZLM13900HCT	900	13.0	98.0	250	114

Cable Ties

Antiskid Tie

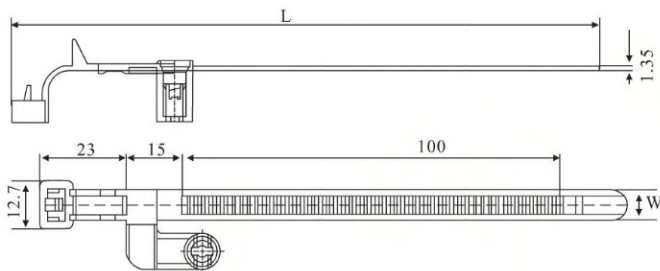
- ◆ Material: Modified nylon, acid and corrosion resistant, not apt to age .
- ◆ Features: Anti-skidding, wear – resisting, easy operating, used upon icy roads and snowfield.



Item NO.	L (mm)		W (mm)	Max.Bundle DIA.(mm)	Min.loop Tensile Strength	
	Inch	mm			LBS	KGS
ZLM9900ASCT	35 1/2"	900	9.0	251	175	80
★ NEW ZLM9900ADCT	35 1/2"	900	9.0	251	175	80

Holder Cable Ties

- ◆ Material: Nylon 66, 94V-2 certificated by UL. Heat-resisting, Acid & erosion control, insulate well and not apt to age.



Item NO.	L (mm)	W (mm)	Max.Bundle DIA.(mm)	Min.loop Tensile Strength	
				LBS	KGS
ZLM8155HCT	155	8.0	30	40	18

Super Tensile Cable Ties

- ◆ Material: Nylon 66, 94V-2 certificated by UL. Heat-resisting, Acid & erosion control, insulate well and not apt to age.
- ◆ Usage: Both surfaces of cable tie have teeth, tensile strength 20% higher than standard cable tie.



Item NO.	L (mm)	W (mm)	Max.Bundle DIA.(mm)	Min.loop Tensile Strength	
				LBS	KGS
ZLM4150STCT	150	3.6	35	50	22
ZLM4200STCT	200	3.6	50	50	22
ZLM4250STCT	250	3.6	65	50	22
ZLM4300STCT	300	3.6	80	50	22
ZLM5180STCT	180	4.8	42	60	27
ZLM5200STCT	200	4.8	50	60	27
ZLM5250STCT	250	4.8	65	60	27
ZLM5280STCT	280	4.8	70	60	27
ZLM5300STCT	300	4.8	82	60	27
ZLM5350STCT	350	4.8	90	60	27
★ NEW ZLM5400STCT	400	4.8	108	50	22
★ NEW ZLM5450STCT	450	4.8	130	50	22
★ NEW ZLM5500STCT	500	4.8	150	50	22
ZLM8200STCT	200	7.6	50	145	65
ZLM8300STCT	300	7.6	90	145	65
★ NEW ZLM8400STCT	400	7.6	105	120	55
★ NEW ZLM8450STCT	450	7.6	125	120	55
★ NEW ZLM8500STCT	500	7.6	145	120	55
ZLM9600STCT	600	9.0	170	210	95
ZLM9700STCT	700	9.0	205	210	95
★ NEW ZLM9920STCT	920	9.0	265	175	80
★ NEW ZLM91020STCT	1020	9.0	295	175	80

We welcome OEM orders for cable ties or plastic parts by samples, drawing or molds.

- ◆ The OEM orders for wire connectors by samples, drawing or molds shouldn't involve in the infringement of atent.
- ◆ All pictures here are for reference only.



ZLAEIMI



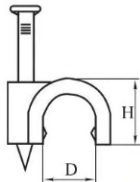
Cable Clips



Living on quality, Developing on credit.

Circle Cable Clips

- ◆ PE(white, grey), high elasticity, impact resistance.
- ◆ Inserting type, nail attached in clips. Save time and cost.



Circle Cable Clips



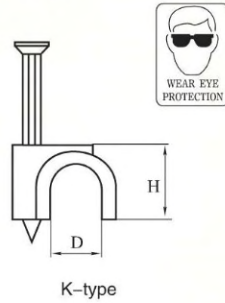
Item NO.	(H) (mm)	D(mm)	Nail(mm)	Color
ZLM3.6x3CCC	3.6	3.0	1.4 × 15	WHITE GREY BLACK BROWN DARK GREY
ZLM4.2x3.5CCC	4.2	3.5	1.4 × 15	
ZLM5.3x4CCC	5.3	4.0	1.7 × 14	
ZLM6x5CCC	6.0	5.0	1.7 × 14	
ZLM8x6CCC	8.0	6.0	1.8 × 17	
ZLM8.7x7CCC	8.7	7.0	1.8 × 17	
ZLM9.5x8CCC	9.5	8.0	2.0 × 19	
ZLM11x9CCC	11.0	9.0	2.0 × 20	
ZLM12x10CCC	12.0	10.0	2.1 × 23	
ZLM13.5x12CCC	13.5	12.0	2.1 × 25	
ZLM16.5x14CCC	16.5	14.0	2.3 × 30	
ZLM18x16CCC	18.0	16.0	2.3 × 32	
ZLM20x17CCC	20.0	17.0	2.6 × 38	
ZLM20.5x18CCC	20.5	18.0	2.6 × 38	
ZLM22.5x20CCC	22.5	20.0	2.6 × 40	
ZLM23.5x22CCC	23.5	22.0	2.9 × 42	
ZLM26.5x25CCC	26.5	25.0	2.9 × 50	
ZLM32.5x30DNCCC (Double Nail)	32.5	30.0	3.3 × 55	
ZLM34.5x32DNCCC (Double Nail)	34.5	32.0	3.3 × 55	
ZLM38x35DNCCC (Double Nail)	38.0	35.0	3.3 × 60	
ZLM43.8x40DNCCC (Double Nail)	43.8	40.0	3.3 × 65	
ZLM54.5x50DNCCC (Double Nail)	54.5	50.0	4.0 × 78	

Cable Clips



K-type Circle Cable Clips

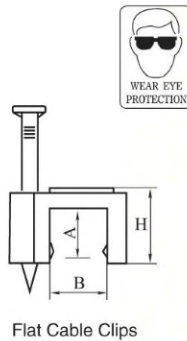
- ◆ PE(white, grey), high elasticity, impact resistance.
- ◆ Inserting type, nail attached in clips. Save time and cost.



Item NO.	(H) (mm)	D(mm)	Nail(mm)	Color
ZLM6.3x4KCCC	6.3	4.0	2.5 × 18	WHITE GREY BLACK BROWN DARK GREY
ZLM7.4x5KCCC	7.4	5.0	2.5 × 18	
ZLM8.4x6KCCC	8.4	6.0	2.5 × 20	
ZLM9.7x7KCCC	9.7	7.0	2.5 × 20	
ZLM13x8KCCC	13.0	8.0	2.5 × 22	
ZLM13x9KCCC	13.0	9.0	2.5 × 22	
ZLM13.8x10KCCC	13.8	10.0	2.5 × 25	
ZLM16x12KCCC	16.0	12.0	2.5 × 27	
ZLM18.5x14KCCC	18.5	14.0	2.5 × 27	
ZLM21x16KCCC	21.0	16.0	3.0 × 37	
ZLM26x22KCCC	26.0	22.0	3.0 × 41	
ZLM31x25KCCC	31.0	25.0	3.0 × 47	

Flat Cable Clips

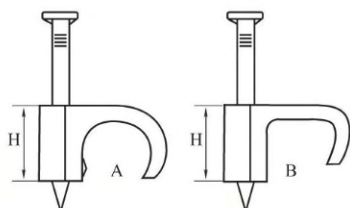
- ◆ PE(white, grey), high elasticity, impact resistance.
- ◆ Inserting type, nail attached in clips. Save time and cost.



Item NO.	(H)(mm)	A(mm)	B(mm)	Nail(mm)	Color
ZLM3.5x2x2.5FCC	3.5	2.0	2.5	1.4 × 15	WHITE GREY BLACK BROWN DARK GREY
ZLM5.5x3,5x4FCC	5.5	3.5	4	1.7 × 14	
ZLM5.5x3,5x5FCC	5.5	3.5	5	1.7 × 14	
ZLM6x4,1x6FCC	6.0	4.1	6	1.7 × 16	
ZLM6.5x4,7x7FCC	6.5	4.7	7	1.8x17	
ZLM7x5x8FCC	7.0	5.0	8	2.1 × 19	
ZLM8x5,4x9FCC	8.0	5.4	9	2.1 × 19	
ZLM8x5,6x10FCC	8.0	5.6	10	2.1 × 19	
ZLM8.5x5,6x12FCC	8.5	5.6	12	2.3 × 22	
ZLM10x7x14FCC	10.0	7.0	14	2.3 × 22	
ZLM12.5x8.5x18FCC	12.5	8.5	18	2.6 × 27	
ZLM14x10.5x19FCC	14.0	10.5	19	2.6 × 27	

Coaxial Cable Clips

- ◆ PE (white, grey), high elasticity, impact resistance.
- ◆ Inserting type, nail attached in clips. Save time and cost.



Coaxial Cable Clips



Item NO.	(W) (mm)	(H) (mm)	(Nail) (mm)	Type
ZLM04067.5ACCC	4~6	7.5	1.6 × 16	A
ZLM04077.5ACCC	4~7	7.5	1.8 × 20	
ZLM06077.5ACCC	6~7	7.5	2.1 × 19	
ZLM08127ACCC	8~12	12.0	2.1 × 25	
ZLM121615.5ACCC	12~16	15.5	2.3 × 32	
ZLM161919ACCC	16~19	19.0	2.6 × 38	
ZLM202522.5ACCC	20~25	22.5	2.6 × 40	B
ZLM04067.5BCCC	4~6	7.5	1.6 × 16	
ZLM05087.3BCCC	5~8	7.3	2.1 × 25	
ZLM06108.3BCCC	6~10	8.3	2.1 × 25	

Coaxial Cable Clips

- ◆ PE (white, grey), high elasticity, impact resistance.
- ◆ Inserting type, nail attached in clips. Save time and cost.



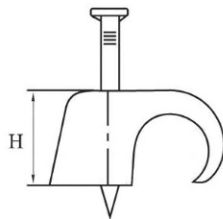
Item NO.	(W) (mm)	(H) (mm)	(Nail) (mm)	Type
ZLM03-05x5ACCC	3~5	5.0	1.2 × 20	A
ZLM05-07x7.9ACCC	5~7	7.9	1.2 × 20	
ZLM07-10x10.3ACCC	7~10	10.3	1.6 × 25	
ZLM08-12x11.8ACCC	8~12	11.8	2.0 × 31	
ZLM10-14x13ACCC	10~14	13.0	2.0 × 31	
ZLM14-20x16.5ACCC	14~20	16.5	2.1 × 35	B
ZLM03-05x5BCCC	3 × 5	5.0	1.2 × 20	
ZLM04-06x5.8BCCC	4 × 6	5.8	1.6 × 16	
ZLM06-09x7.6BCCC	6 × 9	7.6	1.6 × 24	

Cable Clips

★ NEW

Coaxial Cable Clips

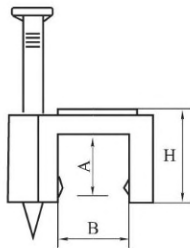
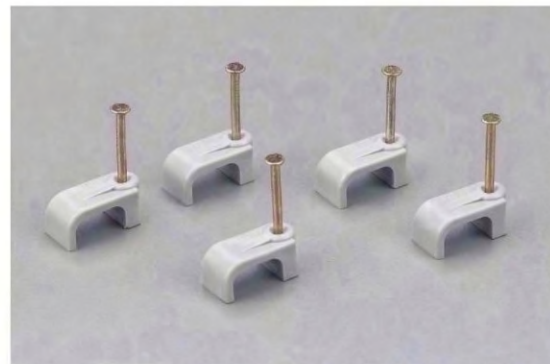
- ◆ PE(white, grey), high elasticity, impact resistance.
- ◆ Inserting type, nailattached in clips.Save time and cost.



Item NO.	(W) (mm)	(H) (mm)	(Nail) (mm)
ZLM02-04x4BCCCC	2~4	4	1.6 × 15
ZLM04-07x6.8BCCCC	4~7	6.8	1.8 × 26
ZLM07-12x10BCCCC	7~12	10	1.9 × 30
ZLM10-14x11.6BCCCC	10~14	11.6	1.9 × 30

Twin & Eath Cable Clips

- ◆ PE(white, grey), high elasticity, impact resistance.
- ◆ Inserting type, nailattached in clips.Save time and cost.



TE Cable Clips

Item NO.	H(mm)	A(mm)	B(mm)	Nail(mm)
ZLM7.3x4.5x9TECC	7.3	4.5	9.0	2.1 × 23
ZLM8.2x5.5x10TECC	8.2	5.5	10.0	2.1 × 23
ZLM8.5x5.6x12TECC	8.5	5.6	12.0	2.1 × 23
ZLM10.5x7x14TECC	10.5	7	14.0	2.1 × 28
ZLM11.5x8.5x17TECC	11.5	8.5	17.0	2.1 × 28
ZLM7.3x4.9x17DTECC (Double)	7.3	4.9	17.0	2.1 × 23
ZLM8.4x5.8x20DTECC (Double)	8.4	5.8	20.0	2.1 × 23

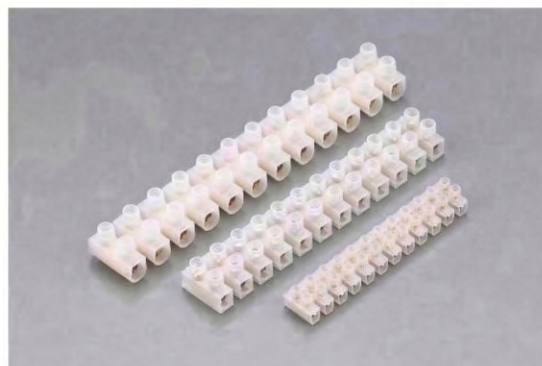
ZLA 2011 MI

D Terminal Blocks Wire Connectors Quick Wire Connectors



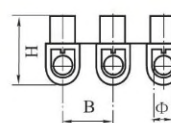
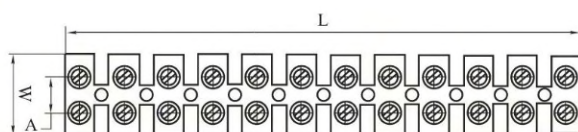
Living on quality, Developing on credit.

Terminal Blocks

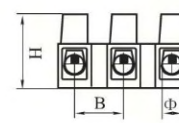


Material:

- ◆ PE, Working Temperature: - 40°C to 65°C, short time is 80°C.
- ◆ PP, Working Temperature: - 30°C to 90°C, short time is 110°C.
- ◆ PA, Working Temperature: - 35°C to 120°C, short time is 140°C.
- ◆ Brass, Iron screw.
- ◆ Voltage: 250 - 450V



U Type



H Type

U Type

Item NO.	L(mm)	W(mm)	H(mm)	A(mm)	B(mm)	Φ(mm)	Rated Voltage	Rated Current	Wire Range
ZLM3A380VUTB	90.3	15.5	11.5	6	7.7	φ 3.1	380V	3A	2.5-4.0mm ²
ZLM6A380VUTB	110.5	15.5	12.4	6.5	9.5	φ 3.2	380V	6A	4.0-6.0mm ²
ZLM10A380VUTB	116.7	20	14.9	8	10	φ 4	380V	10A	6.0-10.0mm ²
ZLM16A380VUTB	136.8	21.5	16.7	10	11.7	φ 4.2	380V	16A	10.0-12.0mm ²
ZLM20A380VUTB	153.5	24.5	17.4	11.5	13.2	φ 4.3	380V	20A	12.0-14.0mm ²
ZLM30A380VUTB	164.6	25	18.8	12	14.1	φ 5.5	380V	30A	16mm ²
ZLM60A380VUTB	187.6	29	23.5	12	16	φ 6.8	380V	60A	25mm ²
ZLM80A400VUTB	205	33	27	15	17	φ 7.0	400V	80A	35mm ²
ZLM100A400VUTB	250	46	31	22	21	φ 9.0	400V	100A	40mm ²

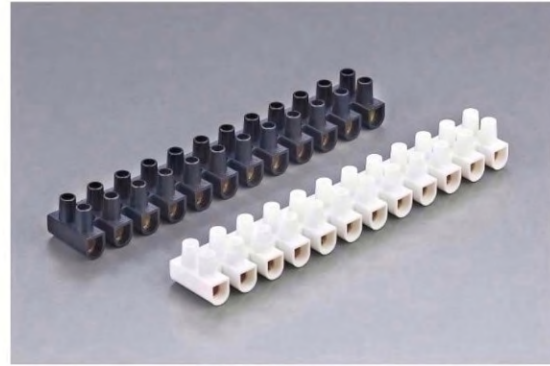
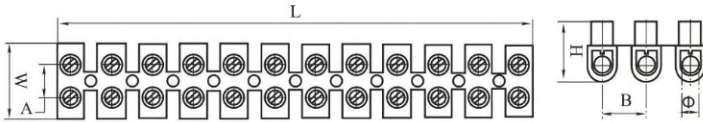
H Type

Item NO.	L(mm)	W(mm)	H(mm)	A(mm)	B(mm)	Φ(mm)	Rated Voltage	Rated Current	Wire Range
ZLM3A380VHTB	90.8	15.5	12	6	7.8	φ 3.1	380V	3A	2.5-4.0mm ²
ZLM6A380VHTB	111.4	15.5	13.5	6.5	9.6	φ 3.2	380V	6A	4.0-6.0mm ²
ZLM10A380VHTB	116.4	20	15.3	8	10	φ 4	380V	10A	6.0-10.0mm ²
ZLM16A380VHTB	133.8	22.7	16	10	11.5	φ 4.2	380V	16A	10.0-12.0mm ²
ZLM20A380VHTB	152.2	24.6	16	11.5	13.2	φ 4.3	380V	20A	12.0-14.0mm ²
ZLM30A380VHTB	162	25	19.3	12	13.9	φ 5.5	380V	30A	16mm ²
ZLM60A380VHTB	184.6	28.6	23	12	15.8	φ 6.8	380V	60A	25mm ²

Terminal Blocks

NF Certificated Terminal Block

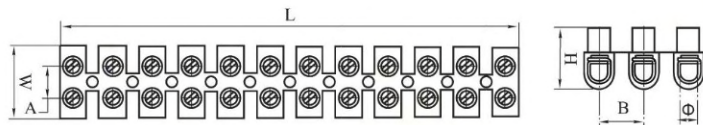
- ◆ PP, Polypropylene, inflaming retarding, low transparency, low rigidity, good bounce impact force.
- ◆ Working Temperature: -30°C to 90°C , short time is 110°C
- ◆ Brass, Iron screw.



Item NO.	L(mm)	W(mm)	H(mm)	A(mm)	B(mm)	Φ(mm)	Rated Voltage	Rated Current	Wire Range
ZLM3A2.5NFTB	90.3	15.5	11.5	6.0	7.7	φ 3.1	380V	3A	2.5mm ²
ZLM3A4NFTB	91.6	15.6	12	6.1	7.8	φ 3.1	380V	3A	2.5–4.0mm ²
ZLM6A6NFTB	110.9	15.8	14.2	6.5	9.5	φ 3.6	380V	6A	4.0–6.0mm ²
ZLM10A10NFTB	118	20.2	16.5	7.9	10.1	φ 4.5	380V	10A	6.0–10.0mm ²
ZLM30A16NFTB	168.6	25	19.2	11	14.5	φ 5.5	380V	30A	16mm ²
ZLM60A25NFTB	191.4	29	23.7	12	16.4	φ 6.8	380V	60A	25mm ²

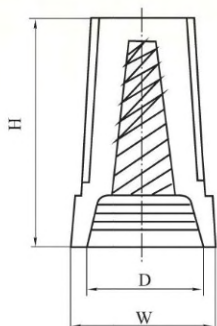
Iron Tube Terminal Block

- ◆ PP, Polypropylene, inflaming retarding, low transparency, low rigidity, good bounce impact force.
- ◆ Working Temperature: -30°C to 90°C , short time is 110°C
- ◆ Iron tube screw.



Item NO.	L(mm)	W(mm)	H(mm)	A(mm)	B(mm)	Φ(mm)	Rated Current
ZLM3A2.5ITTB	93.7	15.5	13	6.5	8	φ 3.1	3A
ZLM6A6ITTB	111.7	16.5	15.9	7	9.5	φ 4	6A
ZLM10A10ITTB	133.8	20.7	18.9	10	11.4	φ 4.9	10A
ZLM30A16ITTB	152.3	24	20.8	12	13	φ 5.6	30A
ZLM60A25ITTB	191.5	30	23.8	11	16.4	φ 6.8	60A

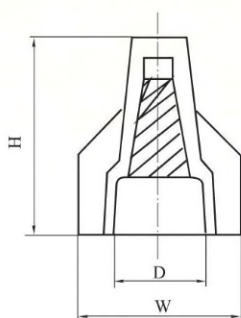
Screw On Wire Connectors



- ◆ Material: UL Nylon 66 , with spring inside.
- ◆ Usage: peel wire coat, insert wires in, then tighten.

Item NO.	(H)(mm)	(W)(mm)	(D)(mm)	Suitable Wires	Color
ZLM15x8.5x6.5SOWK	15	8.5	6.5	MIN#20 × 1+#22 × 1 MAX#16 × 2	Grey
ZLM18x10x7.5SOWK	18	10	7.5	MIN#20 × 3 MAX#16 × 3	Blue
ZLM20x11.5x9.5SOWK	20	11.5	9.5	MIN#20 × 3 MAX#16 × 3+#18 × 1	Orange
ZLM23.5x13.5x10.8SOWK	23.5	13.5	10.8	MIN#14 × 1+#18 × 1 MAX#14 × 4+#18 × 1	Yellow
ZLM23.5x15.5x12.7SOWK	23.5	15.5	12.7	MIN#14 × 2 MAX#10 × 2+#12 × 2	Red

Double Wings Screw On Wire Connectors



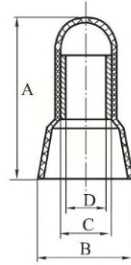
- ◆ Material: UL Nylon 66 , with spring inside.
- ◆ Usage: peel wire coat, insert wires in, then tighten.

Item NO.	(H)(mm)	(W)(mm)	(D)(mm)	Suitable Wires	Color
ZLM22x19x12.5DWSOWK	22.0	19.0	12.5	MIN#18 × 2 MAX#12 × 3	Yellow
ZLM28x22x15DWSOWK	28.0	22.0	15.0	MIN#14 × 2 MAX#10 × 4	Red



Safety-type Wire Joints

- ◆ Shell material: Nylon 66, 94V-2, certificated agree, by UL.
- ◆ Usage: Peel the coat of wire, then insert to tube, use pincers to fix them.
- ◆ Feature: Nylon shell, long copper tube, easy to conduct electricity and hold wire tightly.

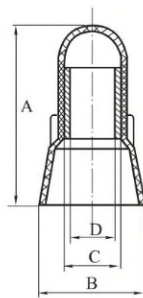


(CHS-φ3-φ10)



Item NO.	A (mm)	W		D (mm)	mm ²	Suitable Wires Awg
		B (mm)	C (mm)			
ZLMF3STWJ	18	9	3.6	2.8	1.25	22-16
ZLMF4STWJ	21	9.5	3.9	3	2	16-14
ZLMF5STWJ	22.5	10.5	4.8	4	5.5	12-10
ZLMF6STWJ	24	12	5.6	4.8	8	8
ZLMF7STWJ	25.5	13	6.5	5.5	10	8-6
ZLMF8STWJ	25.5	14	7.5	6	13	6
ZLMF9STWJ	29.5	15.5	9.3	7.8	16	4

Safety-type Wire Joints



(CHS-A4-A7.5)



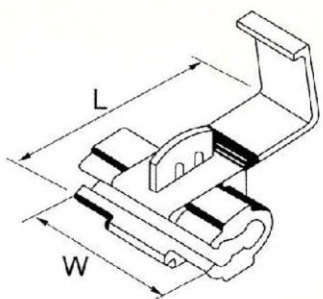
Item NO.	A (mm)	W		D (mm)	mm ²	Suitable Wires Awg
		B (mm)	C (mm)			
ZLMA4STWJ	20	9.0	2.8	4.0	1.25	22-16
ZLMA5STWJ	21	10.2	3.6	5.0	2	16-14
ZLMA5.5STWJ	25	11.5	3.9	5.5	5.5	12-10
ZLMA6STWJ	26.5	12.8	4.5	6.1	8	8
ZLMA7.5STWJ	28	14.4	5.5	7.5	10	8-6

All Plastics Connectors

Item NO.	(H) (mm)	(W) (mm)	(D) (mm)	Suitable Wires	Color
ZLMN71QWC	15	8.5	6.5	MIN#20 × 1+#22 × 1 MAX#16 × 2	Grey
ZLMN72QWC	18	10	7.5	MIN#20 × 3 MAX#16 × 3	Blue
ZLMN73QWC	20	11.5	9.5	MIN#20 × 3 MAX#16 × 3+#18 × 1	Orange
ZLMN74QWC	23.5	13.5	10.8	MIN#14 × 1+#18 × 1 MAX#14 × 4+#18 × 1	Yellow
ZLMN75QWC	23.5	15.5	12.7	MIN#14 × 2 MAX#10 × 2+#12 × 2	Red



Quick Wire Connectors



Item NO.	A.W.G mm ²	Color
ZLMT1QWC	22-18A.W.G 0.5-1.0mm ²	Red
ZLMT2QWC	20-16A.W.G 0.75-1.5mm ²	Blue
ZLMT5QWC	18-14A.W.G 1.0-2.5mm ²	Yellow

Item NO.	Dimension		A.W.G mm ²	Color
	W (mm)	L(mm)		
ZLMKW3QWC	20.0	27.0	22-18 A.W.G 0.5-1.0mm ²	Red
ZLMKW4QWC	20.0	27.0	18-14 A.W.G 1.0-2.5mm ²	Blue
ZLMKW5QWC	20.5	34.5	12-10 A.W.G 4-6mm ²	Yellow
ZLMKW6QWC	-	-	22-20 A.W.G 0.5-0.75mm ²	Red

Push-in Wire Connectors

- ◆ Poly carbonate, UL 94V-0 flame-retardant shell.
- ◆ Stainless steel elastic plate, high conductivity copper plate to connect wires.
- ◆ Insert wires after peeling the coat.
- ◆ Suitable for solid wire and strand wire, reusable (can insert wires of bigger diameter than the ones striped out)
- ◆ Suitable for fixing wires for lighting and electrical construction.



Item NO.	Color	Poles	Electrical Ratings	Clamping Area Wire Range
ZLM352JPWC	Pink	2	24A, 450V, T110 600V, 105°C (221° F)	0.5-2.5mm ² , Rigid 22-12 AWG, Sol/Str Cu
ZLM353JPWC	Orange	3	24A, 450V, T110 600V, 105°C (221° F)	0.5-2.5mm ² , Rigid 22-12 AWG, Sol/Str Cu
ZLM354JPWC	Light Green	4	24A, 450V, T110 600V, 105°C (221° F)	0.5-2.5mm ² , Rigid 22-12 AWG, Sol/Str Cu
ZLM355JPWC	Light Blue	5	24A, 450V, T110 600V, 105°C (221° F)	0.5-2.5mm ² , Rigid 22-12 AWG, Sol/Str Cu
ZLM356JPWC	Greyish white	6	24A, 450V, T110 600V, 105°C (221° F)	0.5-2.5mm ² , Rigid 22-12 AWG, Sol/Str Cu
ZLM358JPWC	Black	8	24A, 450V, T110 600V, 105°C (221° F)	0.5-2.5mm ² , Rigid 22-12 AWG, Sol/Str Cu
ZLM3510JPWC	Green	10	24A, 450V, T110 600V, 105°C (221° F)	0.5-2.5mm ² , Rigid 22-12 AWG, Sol/Str Cu

We welcome OEM orders for wire connectors by samples, drawing or molds.

- ◆ The OEM orders for wire connectors by samples, drawing or molds shouldn't involve in the infringement of patent.

- ◆ All pictures here are for reference only.



ZLAEIMI



Cable Glands
Wiring Duct



Living on quality, Developing on credit.

Nylon Cable Glands

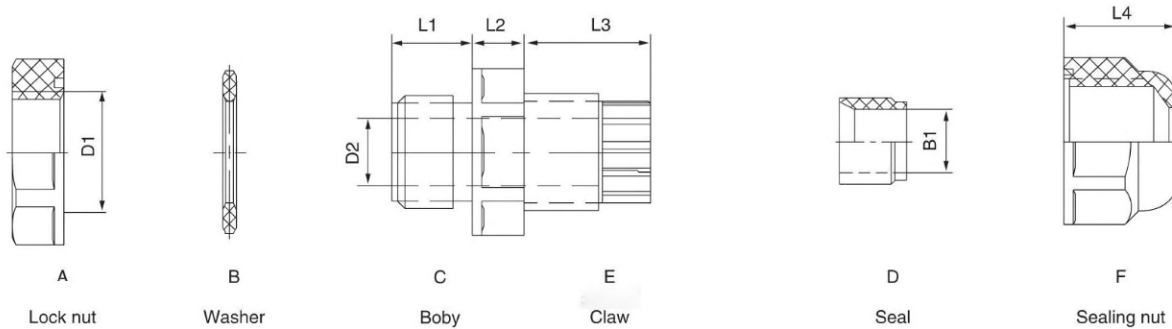
◆Material: made from UL Nylon 66, 94V-2 and tighten ring from rubber.

◆Feature:

1.Special design of clamp ring, good clamping strength and protective for electric machinery.

2.No need of disassembling the cable gland, cable can go through directly then tighten it, easy to operate and save time.

◆Application: used for machinery control box, distribution plate, machine and electrical, etc.



Item NO.	D1(mm)	D2(mm)	L1(mm)	L2(mm)	L3(mm)	L4(mm)	B1(mm)	Cable range
ZLMPG-N07	12.6	8.5	8.4	5.5	13.4	12	6.8	3.5-6
ZLMPG-N09	15.5	11	8.5	5.5	15	13.5	8.8	4-8
ZLMPG-N11	18.3	13.4	8.5	5.5	17	15	10.8	5-10
ZLMPG-N13.5	20.5	15.4	8.5	5.5	18	15	12.8	6-12
ZLMPG-N16	23	17.9	10.5	6	18.5	16.5	14.8	10-14
ZLMPG-N19	24.5	19	11	6	20	19	16	12-15
ZLMPG-N21	28.5	23	10.8	6	20.7	20	18.9	13-18
ZLMPG-N24	32.5	27	11.8	7	24.2	22	22.8	15-22
ZLMPG-N29	36.6	29	11.4	7.5	26.1	24	25.8	18-25
ZLMPG-N36	47.8	39	15	7.5	31	28	33.8	22-32
ZLMPG-N42	55	46	13.2	8	33.8	30	39	30-38
ZLMPG-N48	60	52	14.2	8	34.8	31	45	34-44
ZLMPG-N63	71.4	63.8	19.8	8.8	41.4	41.6	55	42-54

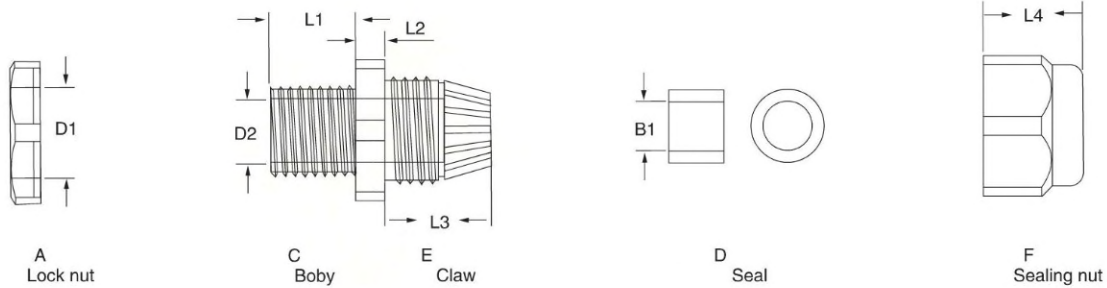
Nylon Cable Glands

◆Material: made from UL Nylon 66, 94V-2 and tighten ring from rubber.

◆Feature:

- 1.Special design of clamp ring, good clamping strength and protective for electric machinery.
- 2.No need of disassembling the cable gland, cable can go through directly then tighten it, easy to operate and save time.

◆Application: used for machinery control box, distribution plate, machine and electrical, etc.

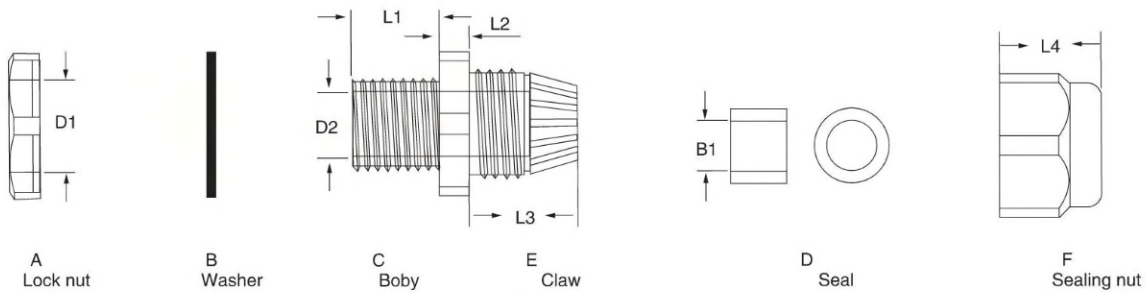


Item NO.	D1(mm)	D2(mm)	L1(mm)	L2(mm)	L3(mm)	L4(mm)	B1(mm)	Cable range
ZLMPG-07	12.1	8.7	8.3	5	15.0	13.8	6.9	3.5-6
ZLMPG-09	16.2	11.1	8.7	4.6	16.1	15.7	8.9	4-8
ZLMPG-11	18.2	13.4	8.7	5.1	18.1	17.9	11.3	5-10
ZLMPG-13.5	20.1	15.5	8.9	5.0	19.2	18.3	12.8	6-12
ZLMPG-16	22.3	17.6	11.3	5.2	20.2	18.1	13.7	10-14
ZLMPG-19	24.1	19.1	11.1	5.1	21.1	20.5	15.8	12-15
ZLMPG-21	26.7	21.4	11.1	5.1	23.0	22.0	17.4	13-18
ZLMPG-24	30.1	24.8	12.8	5.8	23.9	23.7	23.1	15-22
ZLMPG-29	35.9	28.8	11.9	6.9	24.4	23.5	25.3	18-25
ZLMPG-36	46.4	39.1	16.0	7.8	30.7	27.3	31.9	22-32
ZLMPG-42	53.9	46.7	15.4	7.9	33.2	28.5	37.1	30-38
ZLMPG-48	60.2	52.6	18.0	7.9	35.5	30.3	45.1	34-44
ZLMPG-63	70.6	63.9	28.9	8.9	41.4	41.3	49.3	42-54



Nylon Cable Glands(metric)

- ◆ Threaded entry: Metric
- ◆ Color : black and grey
- ◆ Working temperature:
-40°C-100°C, the item can also endure 120°C instantly
- ◆ protection: IP68
- ◆ Standard: IEC698

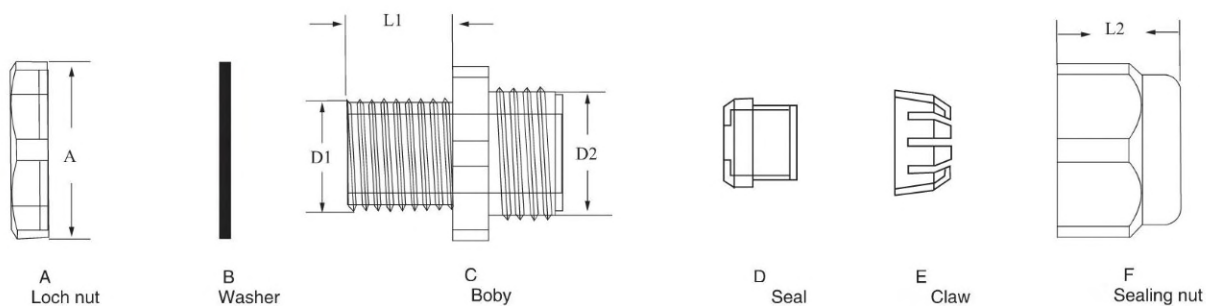


Item NO.	D1(mm)	D2(mm)	B1(mm)	L1(mm)	L4(mm)	Cable range
ZLMM12x1.5	12	8.3	6	7.9	13.3	3-6.5
ZLMM16x1.5	16	10.9	9.6	15	15.8	5-10
ZLMM20Sx1.5	20	14.8	12.5	15	18.4	3-7
ZLMM20Mx1.5	20	14.8	12.5	15	18.4	6-12
ZLMM20Lx1.5	20	15.5	14.5	15	19.5	10-14
ZLMM25x1.5	25	21	18.4	15	22.3	13-18
ZLMM32x1.5	32	26	26.2	15	24.8	18-25
ZLMM40x1.5	40	33	33.4	18	31.6	25-32
ZLMM50x1.5	50	42.5	36.5	18	31.6	30-38
ZLMM63x1.5	63	54.1	44	18.5	32.6	34-44



Nylon Cable Glands(metric)

- ◆ Threaded entry: Metric
- ◆ Color : black and grey
- ◆ Working temperature: -40°C – 100°C , the item can also endure 120°C instantly.
- ◆ protection: IP68
- ◆ Standard: IEC698



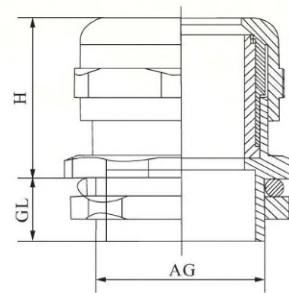
Item NO.	Threaded entry metric (mm)	Cable range ϕ (mm)	D1(mm)	D2(mm)	Panel mounting hole (mm)	L1(mm)	L2 (mm)	A (mm)
ZLMMG12	M12 \times 1.25	7.6–4.6	12	M16 \times 1.5	12.5	8.5	16	19
ZLMMG16	M16 \times 1.5	10–6	16	M20 \times 1.5	16.5	15	19.5	24
ZLMMG20	M20 \times 1.5	14–9	20	M25 \times 1.5	20.5	15	21.5	30
ZLMMG25	M25 \times 1.5	18–13	25	M31 \times 2	25.5	15	24.5	36
ZLMMG32	M32 \times 1.5	25–18	32	M38 \times 2	33	15	27.5	46
ZLMMG40	M40 \times 1.5	30–24	40	M46 \times 2	41	20	31	54
ZLMMG50	M50 \times 1.5	39–30	50	M58 \times 2	51	23	37	67
ZLMMG63	M63 \times 1.5	48.5–40	63	M72 \times 2	64	24	42	81.5

Brass Cable Glands



Brass Cable Glands

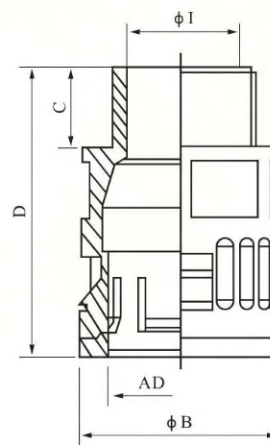
ITEM NO.	(mm) Cable range	(mm) Thread O.D.	(mm) Mounting hole diameter	GL (mm) Thread length GL	H (mm) Joint length H	(mm) Spanner size
ZLMM8x1BCC	5.5-2	8	8-8.2	5	16	12
ZLMM10x1BCC	6.5-3	10	10-10.2	7	19	14
ZLMM12x1.5BCC	6.5-3	12	12-12.2	7	19	14
ZLMM14x1.5BCC	8-4	14	14-14.2	7	19	17
ZLMM16x1.5BCC	8-4	16	16-16.2	8	20	18
ZLMM18x1.5BCC	10-5	18	18-18.2	8	21	20
ZLMM20x1.5BCC	12-6	20	20-20.2	8	22	22
ZLMM22x1.5BCC	14-10	22	22-22.2	8	23	24
ZLMM24x1.5BCC	14-10	24	24-24.2	9	25	24/27
ZLMM25x1.5BCC	14-10	25	25-25.2	9	25	24/27
ZLMM27x1.5BCC	18-13	27	27-27.2	9	27	30
ZLMM28x1.5BCC	18-13	28	28-28.2	9	27	30
ZLMM30x1.5BCC	18-13	30	30-30.2	9	29	30/32
ZLMM32x1.5BCC	22-15	32	32-32.2	10	29	35
ZLMM36x1.5BCC	25-18	36	36-36.2	10	31	40
ZLMM40x1.5BCC	25-18	40	40-40.2	11	31	40/45
ZLMM42x1.5BCC	30-22	42	42-42.2	11	35	45
ZLMM48x1.5BCC	33-25	48	48-48.2	11	37	50/52
ZLMM50x1.5BCC	38-32	50	50-50.2	12	37	50/55
ZLMM54x1.5BCC	38-32	54	54-54.2	12	38	57
ZLMM60x1.5BCC	44-37	60	60-60.2	13	38	64
ZLMM63x1.5BCC	44-37	63	63-63.2	13	38	64/68
ZLMPG7BCC	6.5-3	12.5	12.5-12.7	7	19	14
ZLMPG9BCC	8-4	15.2	15.2-15.4	8	20	17
ZLMPG11BCC	10-5	18.6	18.6-18.8	8	21	20/21
ZLMPG13.5BCC	12-6	20.4	20.4-20.6	8	22	22
ZLMPG16BCC	14-10	22.5	22.5-22.7	9	23	24
ZLMPG19BCC	14-10	25	25-25.2	9	25	24/27
ZLMPG21BCC	18-13	28.3	28.3-28.5	9	27	30
ZLMPG25BCC	22-15	32	32-32.2	10	29	35
ZLMPG29BCC	25-18	37	37-37.2	11	31	40
ZLMPG36BCC	33-25	47	47-47.2	12	37	50
ZLMPG42BCC	38-32	54	54-54.2	13	38	57
ZLMPG48BCC	44-37	59.3	59.3-59.5	14	38	64
ZLMPG63BCC	52-42	72	72	15	42	77



- ◆Material: Body: Nickel-plated brass, Seal: PA66, Sealing: NBR.
- ◆Certification: CE, ROHS, REACH.
- ◆Protection rating: IP68.
- ◆Operating Temperature: Static condition: -40°C to 100°C, short-time 120°C. Dynamic condition: -20°C to 80°C, short-time 100°C.
- ◆Thread length: Standard thread type is suitable for equipment with internal thread or with thin plate. Longer thread type is suitable for thick plate.
- ◆Feature: special design of the clamp and seals, extremely easy installation, suit for wide range of cable, strong stretching resistance, waterproof, dust proof, resist to salt, acid, alcohol, grease and other solvent.
- ◆Application: fix the cable gland on the plate, insert cable through the assembled gland and tighten gland locknut until cable is secured.
- ◆Notes: Customization is available.

Corrugated pipe linker

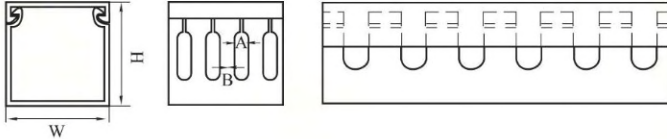
Thread	Applicable tubing Outer ϕ	Length of thread C mm	Smallest inner ϕ I mm	Largest outer ϕ B mm	Total length D mm
ZLMM10x1.5CPL	AD10.0	12.0	6.0	17.0	35.0
ZLMM12x1.5CPL	AD10.0	12.0	7.0	17.0	35.0
ZLMM16x1.5CPL	AD13.0	12.0	7.0	20.0	37.0
ZLMM16Sx1.5CPL	AD13.0	12.0	10.0	20.0	37.0
ZLMM16Lx1.5CPL	AD15.8	12.0	11.5	23.0	39.5
ZLMM18x1.5CPL	AD15.8	12.0	12.0	23.0	39.5
ZLMM20Sx1.5CPL	AD18.5	13.0	14.5	26.0	42.0
ZLMM20Lx1.5CPL	AD21.2	13.0	15.5	29.5	45.0
ZLMM22x1.5CPL	AD21.2	13.0	17.0	29.5	45.0
ZLMM24x1.5CPL	AD21.2	13.0	17.0	29.5	45.0
ZLMM25x1.5CPL	AD21.2	13.0	17.0	29.5	45.0
ZLMM25Sx1.5CPL	AD25.5	13.0	20.5	34.0	46.5
ZLMM25Lx1.5CPL	AD28.5	13.0	20.5	37.0	47.0
ZLMM27x2CPL	AD28.5	13.0	22.5	37.0	47.0
ZLMM30x1.5CPL	AD28.5	13.0	23.5	37.0	47.0
ZLMM32x1.5CPL	AD28.5	13.0	23.5	37.0	47.0
ZLMM32Sx1.5CPL	AD34.5	15.0	26.0	44.0	51.0
ZLMM33x2CPL	AD34.5	15.0	26.0	44.0	51.0
ZLMM36x2CPL	AD34.5	15.0	30.0	44.0	51.0
ZLMM40x1.5CPL	AD34.5	15.0	30.0	44.0	51.0
ZLMM40Sx1.5CPL	AD42.5	15.0	33.0	52.0	54.0
ZLMM42x2CPL	AD42.5	15.0	35.0	52.0	54.0
ZLMM48x2CPL	AD42.5	15.0	36.5	52.0	54.0
ZLMM50x1.5CPL	AD42.5	15.0	36.5	52.0	54.0
ZLMM50Sx1.5CPL	AD54.5	16.0	43.0	64.0	55.0
ZLMM56x2CPL	AD54.5	16.0	48.0	64.0	55.0
ZLMM60x2CPL	AD54.5	16.0	48.0	64.0	55.0
ZLMM63x1.5CPL	AD54.5	16.0	48.0	64.0	55.0
ZLMPG7CPL	AD10.0	12.0	7.0	17.0	35.0
ZLMPG9CPL	AD13.0	12.0	10.0	20.0	37.0
ZLMPG11CPL	AD15.8	12.0	12.0	23.0	39.0
ZLMPG13.5CPL	AD18.5	13.0	14.5	26.0	42.0
ZLMPG16CPL	AD21.2	13.0	17.0	29.5	45.0
ZLMPG21CPL	AD25.5	13.0	21.0	34.0	46.5
ZLMPG21SCPL	AD28.5	13.0	23.5	37.0	47.0
ZLMPG29CPL	AD34.5	15.0	30.0	44.0	51.0
ZLMPG36CPL	AD42.5	15.0	36.5	52.0	54.0
ZLMPG48CPL	AD54.5	16.0	48.0	64.0	55.0



- ◆ Material: plastic (Pa6).
- ◆ Temp: $-40^{\circ}\text{C} \sim +115^{\circ}\text{C}$
- ◆ Colour: Black and grey.
- ◆ Properties: Rational tubing assembly due to one-piece screw connector with push-in lock Simple dismounting by displacing the snap-in sleeve Smallest outer dimensions to be used under confined conditions resistant against oil and acids and solvents Free of silicon, cadmium, halogen Black connectors are UV-resistant.
- ◆ Application: For protectively insulated electrical installations.

Wiring Duct(slotted)

- ◆ Material: made from PVC(grey), good insulation and heat-resisting up to 85°C.
- ◆ Struction: made up of duct bottom and lid, with two out-holes designd at the bottom.



Item NO.	(mm)	(mm)	(A) (mm)	(B) (mm)	Contained Wire(1.5 ²)
ZLM2015WD(SI)	20 × 15	1.5	–	–	5–10PCS
ZLM2020WD(SI)	20 × 20	1.5	6	8	10–15PCS
ZLM2025WD(SI)	20 × 25	1.5	6	8	10–20PCS
ZLM2525WD(SI)	25 × 25	1.5	4	6	10–25PCS
ZLM2545WD(SI)	25 × 45	1.5	8	10	25–40PCS
ZLM2560WD(SI)	25 × 60	1.5	8	10	45–60PCS
ZLM2580WD(SI)	25 × 80	1.5	8	10	50–70PCS
ZLM3015WD(SI)	30 × 15	1.5	–	–	5–15PCS
ZLM3020WD(SI)	30 × 20	1.5	4	6	10–20PCS
ZLM3025WD(SI)	30 × 25	1.5	4	6	15–25PCS
ZLM3030WD(SI)	30 × 30	1.5	4	6	20–30PCS
ZLM3035WD(SI)	30 × 35	1.5	4	6	30–45PCS
ZLM3040WD(SI)	30 × 40	1.5	4	6	35–50PCS
ZLM3050WD(SI)	30 × 50	1.5	4	6	45–60PCS
ZLM3232WD(SI)	32 × 32	1.5	4	6	30–45PCS
ZLM3525WD(SI)	35 × 25	1.5	4	6	25–35PCS
ZLM3535WD(SI)	35 × 35	1.5	4	6	40–55PCS
ZLM4025WD(SI)	40 × 25	1.5	6	8	20–40PCS
ZLM4030WD(SI)	40 × 30	1.5	6	8	35–50PCS
ZLM4035WD(SI)	40 × 35	1.5	6	8	40–50PCS
ZLM4040WD(SI)	40 × 40	1.5	6	8	45–55PCS
ZLM4060WD(SI)	40 × 60	1.5	6	8	60–80PCS
ZLM4080WD(SI)	40 × 80	1.5	6	8	100–120PCS

Wiring Duct

www.zlami.eu

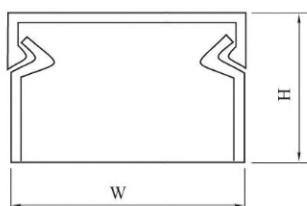
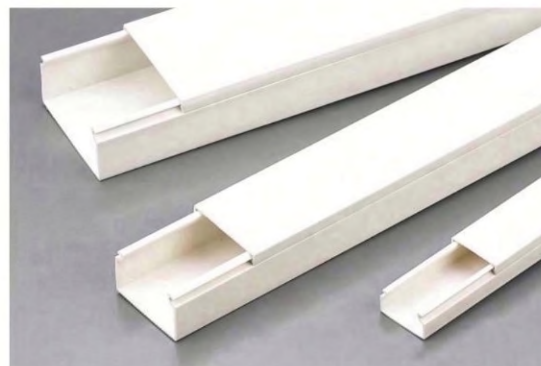
Item NO.	(mm)	(mm)	(A) (mm)	(B) (mm)	Contained Wire(1.5 ²)
ZLM4525WD(SI)	45 × 25	1.5	4	9	25–40PCS
ZLM4535WD(SI)	45 × 35	1.8	6	9	40–55PCS
ZLM4545WD(SI)	45 × 45	1.5	6	9	60–70PCS
ZLM4565WD(SI)	45 × 65	1.5	6	9	90–100PCS
ZLM5015WD(SI)	50 × 15	1.5	–	–	25–35PCS
ZLM5025WD(SI)	50 × 25	1.5	6	9	25–45PCS
ZLM5030WD(SI)	50 × 30	1.5	6	9	30–55PCS
ZLM5035WD(SI)	50 × 35	1.5	6	9	50–60PCS
ZLM5040WD(SI)	50 × 40	1.5	6	9	60–70PCS
ZLM5045WD(SI)	50 × 45	1.5	6	9	70–85PCS
ZLM5050WD(SI)	50 × 50	1.5	6	9	90–100PCS
ZLM5055WD(SI)	50 × 55	1.8	6	9	100–110PCS
ZLM5060WD(SI)	50 × 60	1.8	6	9	110–125PCS
ZLM5080WD(SI)	50 × 80	1.8	8	10	180–200PCS
ZLM50100WD(SI)	50 × 100	2.1	8	10	220–250PCS
ZLM6025WD(SI)	60 × 25	1.8	6	9	45–60PCS
ZLM6040WD(SI)	60 × 40	1.5	6	9	90–100PCS
ZLM6060WD(SI)	60 × 60	1.8	6	9	140–160PCS
ZLM6080WD(SI)	60 × 80	1.8	8	10	250–300PCS
ZLM6525WD(SI)	65 × 25	1.8	8	10	100–110PCS
ZLM6545WD(SI)	65 × 45	1.5	8	10	180–200PCS
ZLM6565WD(SI)	65 × 65	1.5	8	10	200–220PCS
ZLM7550WD(SI)	75 × 50	1.8	8	10	140–160PCS
ZLM8525WD(SI)	85 × 25	1.5	6	8	60–70PCS
ZLM8035WD(SI)	80 × 35	1.5	6	8	160–180PCS
ZLM8040WD(SI)	80 × 40	1.5	6	8	100–120PCS
ZLM8045WD(SI)	80 × 45	1.5	6	8	180–200PCS
ZLM8050WD(SI)	80 × 50	1.5	6	8	200–220PCS
ZLM8055WD(SI)	80 × 55	1.8	8	10	240–290PCS
ZLM8060WD(SI)	80 × 60	1.8	8	10	250–300PCS
ZLM8080WD(SI)	80 × 80	1.8	8	10	280–350PCS
ZLM80100WD(SI)	80 × 100	1.8	8	10	300–400PCS
ZLM100100WD(SI)	100 × 100	2.1	10	12	350–450PCS

Wiring Duct



Wiring Duct(sold)

- ◆ Material: made from PVC(WHITE),good insulation and heatresisting up to 85°C.
- ◆ Struction: made up of duct bottom and lid.
- ◆ Application: used in stage, electric, air conditioning or indoors.
- ◆ Feature: solid design, especially for anti-dust and mouse.



Item NO.	(H × W) (mm)	Contained Wire(1.5 ²)
ZLM1015WD(S)	10 × 15	3-5PCS
ZLM1020WD(S)	10 × 20	3-6PCS
ZLM1025WD(S)	10 × 25	5-10PCS
ZLM1525WD(S)	15 × 25	5-10PCS
ZLM1616WD(S)	16 × 16	5-10PCS
ZLM2030WD(S)	20 × 30	10-20PCS
ZLM2035WD(S)	20 × 35	15-25PCS
ZLM2050WD(S)	20 × 50	20-40PCS
ZLM2540WD(S)	25 × 40	20-40PCS
ZLM3050WD(S)	30 × 50	30-50PCS
ZLM3060WD(S)	30 × 60	55-65PCS
ZLM5080WD(S)	50 × 80	180-200PCS
ZLM50100WD(S)	50 × 100	220-250PCS
ZLM80100WD(S)	80 × 100	260-350PCS
ZLM100100WD(S)	100 × 100	300-400PCS

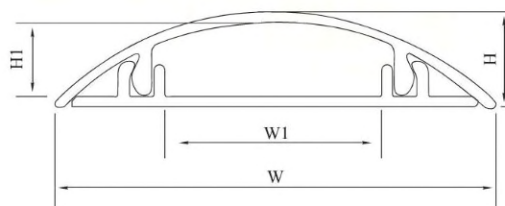
★ *NEW*

Round Type Wiring Duct

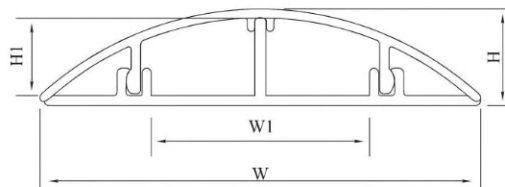
- ◆ Material: High impact, rigid, self-extinguishing P.V.C
- ◆ Service temperature: 85°C
- ◆ Backed with high quality double sided tape for permanent stick. Good for floor wiring to facilitate trolley pass and to avoid trip.



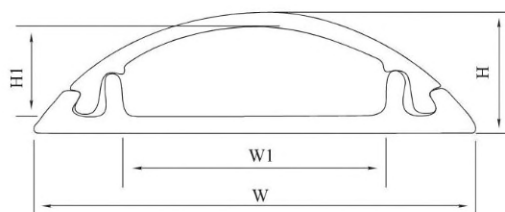
Item NO.	W(mm)	W1(mm)	H(mm)	H1(mm)
ZLM-2RTWD	20	6	6.5	4.5
ZLM-4RTWD	40	16	12	9
ZLM-6RTWD	60	29	13	10.5



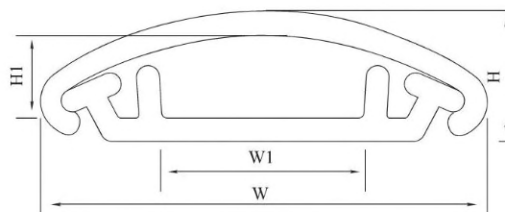
Item NO.	W(mm)	W1(mm)	H(mm)	H1(mm)
ZLM-9RTWD	90	42	20	16
ZLM-12RTWD	120	76	25	21



Item NO.	W(mm)	W1(mm)	H(mm)	H1(mm)
ZLM-3.5H-RTD	35	20	10	7
ZLM-4.5H-RTD	45	28	12.5	9.5
ZLM-7H-RTD	70	44	16	12.5



Item NO.	W(mm)	W1(mm)	H(mm)	H1(mm)
ZLM-3E-RTD	30	12.5	8.5	5.5
ZLM-5E-RTD	50	27	13	9.5
ZLM-7E-RTD	70	36	16	12



ZLAEIMI



Tie Mounts Expand Plugs
Cable tie holder R-type cable clamps



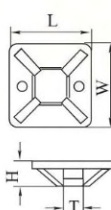
Living on quality, Developing on credit.

Self-adhesive Tie Mounts

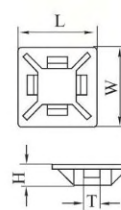
- ◆ Material: ABS、Nylon 66, 94V-2 ,certificated by UL, the back attached sponge glue imported .
- ◆ Usage: Peel the sponge glue and stick on the wall then, bundle the wire with cable ties.
- ◆ Application: for bundling wires and other things save time and convenient , used for the wall which can't be made a hole in.



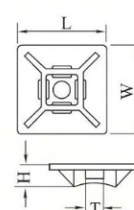
Item NO.	(L × W) (mm)	(H) (mm)	T (mm)	Screw Hole(mm)
ZLM2020TM	20 × 20	6.1	5.0	2.9
ZLM2525TM	25 × 25	7.5	6.2	3.5
ZLM3030TM	30 × 30	8.7	6.4	4.5
ZLM4040TM	40 × 40	6.4	10.8	/
ZLM-1AAM	19 × 19	4.6	4.4	/
ZLM-2AAM	28 × 28	6.4	5.4	5.5



ZLM2020TM



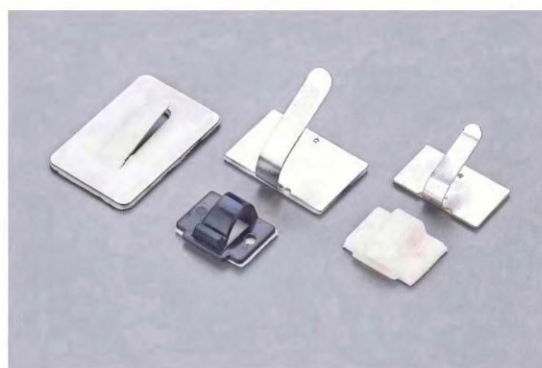
ZLM-1AAM



ZLM-2AAM

Self-adhesive Tie Mounts

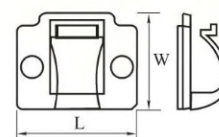
- ◆ Material: Nylon 66, (C-1;C-2).certificated by UL, high grade steel or stainless steel ; sponge double side sticker.
- ◆ Usage: remove the sticker protect paper, stick the clip on the wall, then put the wire through the clip..
- ◆ Character: convenient for use, it is especial suit for the no-holes of wall.



Item NO.	(L × W) (mm)	Matrial	Gum
ZLM-1C	17 × 12	Pa66	3M
ZLM-2C	20 × 14	PA66	
ZLM-3CB	20 × 10	Steel	
ZLM-4CB	25 × 15		
ZLM-5CB	30 × 20		
ZLM-1CBS	20 × 14	Stainless steel	
ZLM-2CBS	30 × 20		
ZLM-3CBS	38 × 25		
ZLM-4CBS	44 × 32		
ZLM-5CBS	53 × 38		



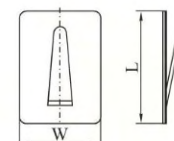
ZLM-1C



ZLM-2C



ZLM-3CB



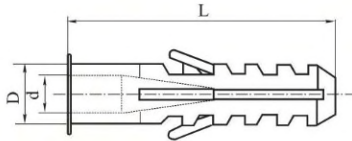
ZLM-3CBS

Expand Plugs



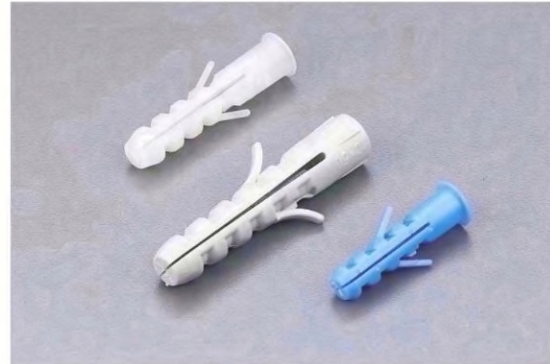
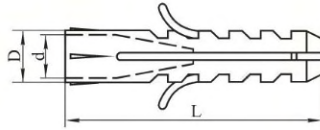
Expand Plugs

- ◆ Material: made of PE.
- ◆ Color: White 、 Grey.



RT Expand Plugs

- ◆ Material: made of PE.
- ◆ Color: White 、 Grey、 Color.



Item NO.	(L) (mm)	(D) (mm)	(d) (mm)	Screw (mm)
ZLM-06EN	29.8	6.0	4.9	Φ4 × 32
ZLM-07EN	29.8	7.0	5.3	Φ5 × 32
ZLM-08EN	39.2	8.0	5.3	Φ5 × 40
ZLM-10EN	44.0	9.9	5.8	Φ5 × 45
ZLM-12EN	48.3	11.6	6.3	Φ6 × 50

Item NO.	(L) (mm)	(D) (mm)	(d) (mm)	Screw (mm)
ZLM-07RT	35.0	7.0	5.7	Φ4 × 37
ZLM-08RT	40.0	8.0	6.7	Φ5 × 42
ZLM-10RT	50.0	10.0	8.5	Φ6 × 53
ZLM-12RT	60.0	12.0	10.4	Φ7 × 63

Expand Plugs

- ◆ Material: made of PE.
- ◆ Color: White 、 Grey.



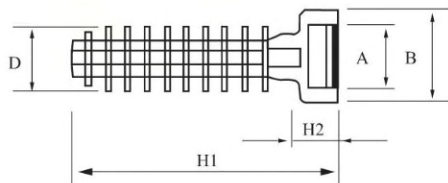
Item NO.	(L) (mm)	(D) (mm)	(d) (mm)	Screw (mm)
ZLM-08L-EN	78.0	8.0	6.0	Φ5.5 × 85
ZLM-10L-EN	99.0	10.0	7.5	Φ7.0 × 102

Cable Tie Holder

www.zlami.eu

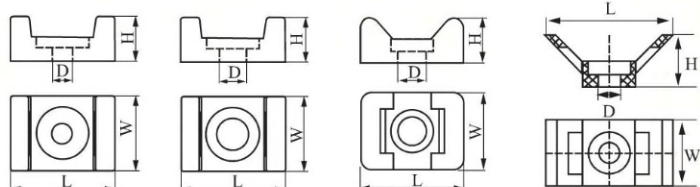
Cable Tie Holder

- ◆ Material : made of PA.
- ◆ Color : White 、 Black.



Item NO.	A(mm)	B(mm)	H1(mm)	H2(mm)	(D)(mm)
ZLM-1CTH	10	14.8	40.2	5.9	10

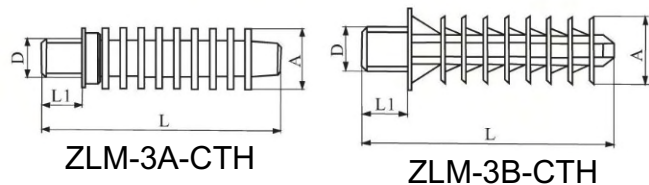
Cable Tie Holder



ZLM-2A-CTH ZLM-2B-CTH ZLM-2C-CTH ZLM-2D-CTH

Item NO.	H(mm)	L(mm)	W(mm)	D(mm)
ZLM-2A-CTH	9.5	22	16	4.5
ZLM-2B-CTH	9.5	22	16	6.8
ZLM-2C-CTH	9.5	22	16.5	5.8
ZLM-2D-CTH	11.8	29	15	5.2

Cable Tie Holder

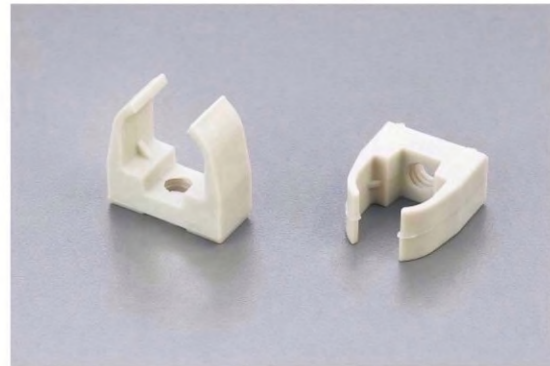
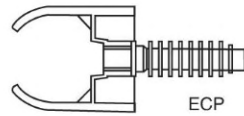
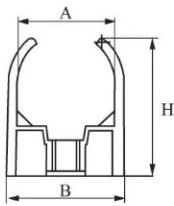


Item NO.	L(mm)	L1(mm)	A(mm)	D(mm)
ZLM-3A-CTH	38	6	10	M7 × 1.5
ZLM-3B-CTH	39	7	10	M6 × 1.5

Saddle Type Clip

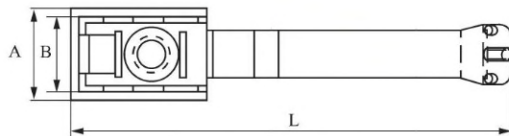


Saddle Type Clip



Item NO.	A(mm)	B(mm)	H(mm)	+ ZLM-3A-CTH
ZLM-16-STC	16	22	26	
ZLM-20-STC	20	26	28	
ZLM-25-STC	25	30	35	

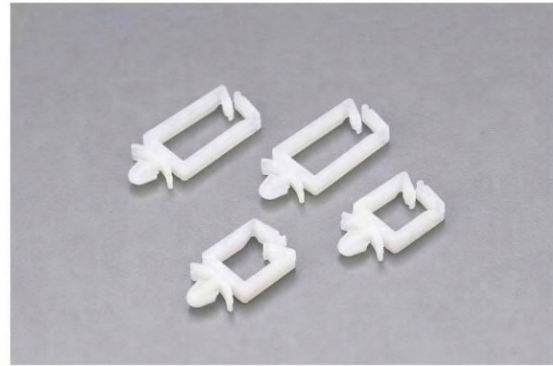
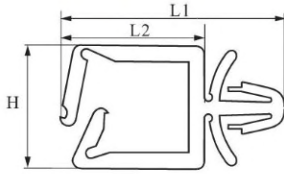
Saddle Mounting Clip



Item NO.	A(mm)	B(mm)	L(mm)	(mm)
ZLM-1-SMC	15.4	12.4	74	16\20
ZLM-2-SMC	15.4	12.4	90	25

R-type Cable Clamps

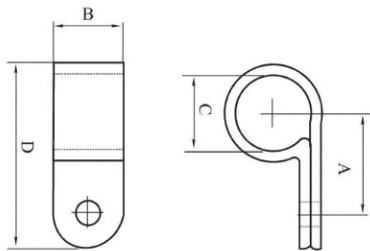
Sq Wire Holder



Item NO.	L1(mm)	L2(mm)	H(mm)	(Φ) Hole Dia.(mm)
ZLM-1-SQ	28	17.5	15.5	6.4
ZLM-2-SQ	36	26	15.5	6.4

R-type Cable Clamps

- ◆ Material: Nylon 66 94v-2 agreed by UL.
- ◆ Usage: put cable in, fix by screw.

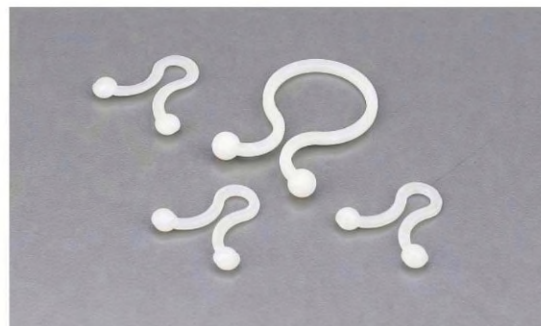
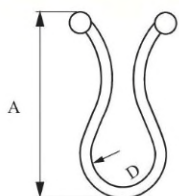


Item NO.	A(mm)	B(mm)	C(mm)		D(mm)
			mm	Inch	
ZLM-1/8R	9.5	9.6	3.2	1/8"	19.8
ZLM-3/16R	9.6	9.6	4.8	3/16"	19.8
ZLM-1/4R	12.0	10.0	6.35	1/4"	22.0
ZLM-5/16R	12.0	10.0	7.9	5/16"	22.0
ZLM-3/8R	12.5	12.0	9.5	3/8"	24.0
ZLM-1/2R	15.2	12.0	12.7	1/2"	31.0
ZLM-5/8R	18.2	12.0	15.8	5/8"	34.3
ZLM-3/4R	18.2	12.0	19.4	3/4"	35.0
ZLM-1R	22.0	12.0	25.4	1"	43.0

Twist Lock

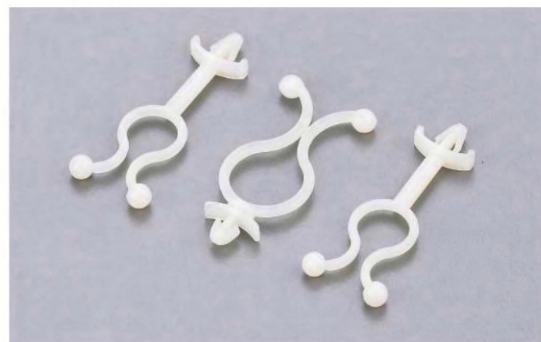
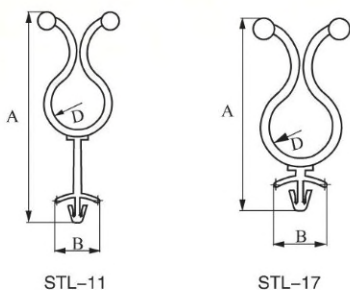


Twist Lock



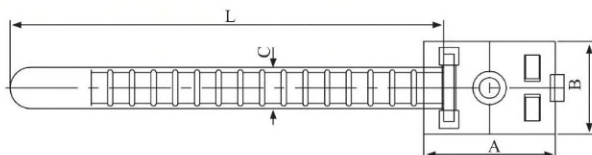
Item NO.	A(mm)	D(mm)
ZLM-5TL	20	5.0
ZLM-8TL	26	8.3
ZLM-11TL	30	11.0
ZLM-13TL	30	13.3
ZLM-18TL	40	17.9
ZLM-23TL	43	22.7

Standoff Twist Lock



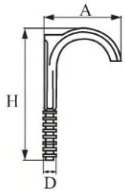
Item NO.	A(mm)	B(mm)	D(mm)	Hole Dia.(mm)
ZLM-11STL	68	14.3	11.0	Φ5.8
ZLM-17STL	51.5	14.3	17.0	Φ5.8

Adjustable Cable Clamp

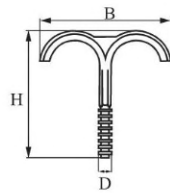


Item NO.	A(mm)	B(mm)	C(mm)	L(mm)	Max.bundle Dia.(mm)
ZLM-70ACC	25.5	18.0	8.0	70	17.0
ZLM-85ACC	25.5	18.0	8.0	85	21.0

F-TYPE Clips



ZLM-25SG

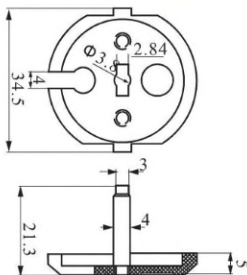


ZLM-25DB

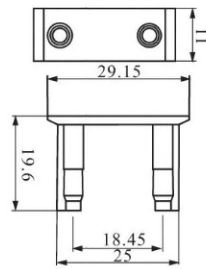


Item NO.	H(mm)	A(mm)	B(mm)	D(mm)
ZLM-25SG	62.5	35	-	6.6
ZLM-25DB	62.5	-	61	6.6

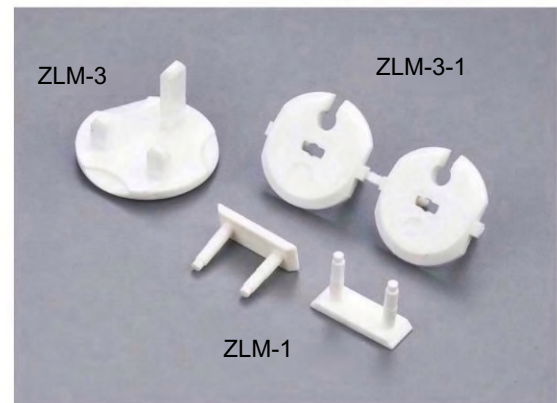
Security Cover



ZLM-3-1



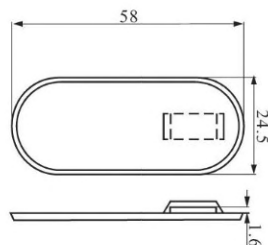
ZLM-1



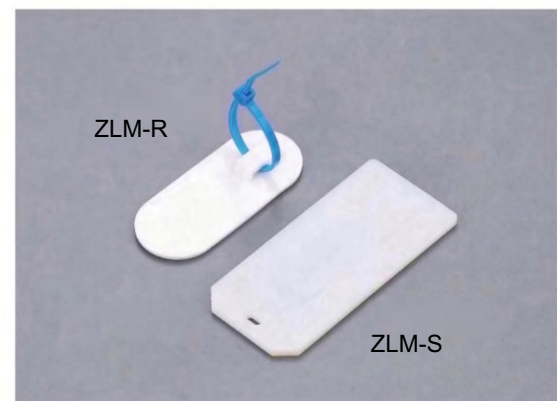
Cable Tag



ZLM-S



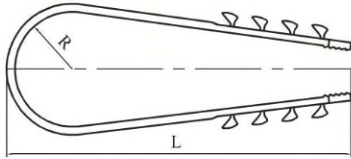
ZLM-R



U-type Cable Clamps

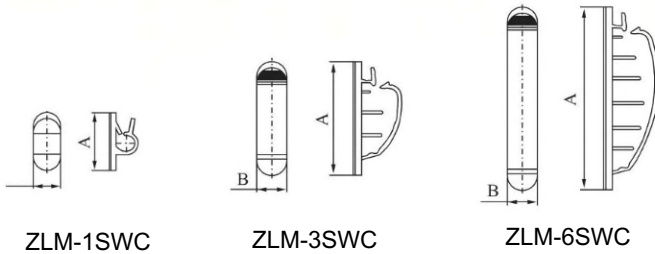


U-type Cable Clamps



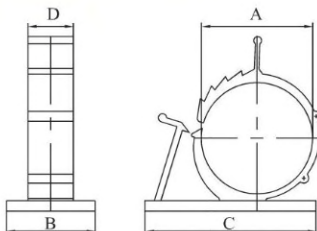
Item NO.	(mm)	L(mm)	R(mm)
ZLM-5-10UT	5-10	45	4.5
ZLM-11-18UT	11-18	55	6.5
ZLM-19-25UT	19-25	65	10.5

Cable Clamp



Item NO.	A(mm)	B(mm)	Digit
ZLM-1SWC	22.5	12.5	1
ZLM-3SWC	54.0	14.2	3
ZLM-6SWC	87.0	14.2	6

Cable Clamp



Item NO.	A φ (mm)	B(mm)	C(mm)	D(mm)
ZLM-06-08TS	06-08	9.0	25.5	10
ZLM-10-13TS	10-13	7.5	37.0	12.4
ZLM-17-22TS	17-22	21.5	41.5	11

ZLA 2011 MI



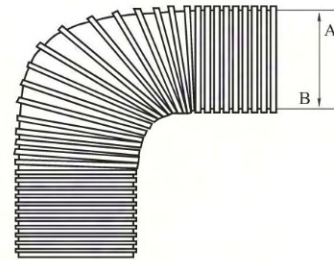
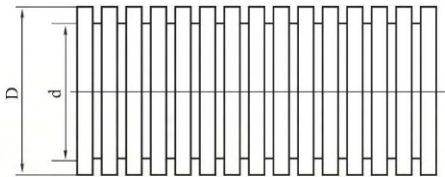
Cable markers Vinyl Wire End Caps
Spiral Wrapping Bands
Heat Shrinkable Tubings



Living on quality, Developing on credit.

Corrugated pipe

- ◆ Material: polyamide (PA6) / polyethylene (PE) / polypropylene (PP) / HB according to UL 94.
- ◆ Temp: polyamide (PA6) -40°C~+115°C+150°C
polyethylene (PE) -50°C~+80°C+100°C
polypropylene (PP) -40°C~+110°C+130°C
- ◆ Colour: Black and grey.
- ◆ Properties: Liquid and Dust proof; Highly resistant to oil, acid and solvents; Free of silicon, cadmium, halogen; Flexible, luster On Surface, abrasion resistant; Racking resistant high mechanical strength; Black tubings are UV-resistant.
- ◆ Application: For protectively insulated electrical installations.



PA Polyamide corrugated pipe

Thread	int. x ext.(mm)	Dimensions mm ± 10%		Lengths in rings m/roll
		Stat	Dyn	
ZLM-10AD	6.5 × 10.0	14.0	35.0	100
ZLM-11.6AD	8.00 × 11.6	17.0	40.0	100
ZLM-13AD	9.50 × 13.0	20.0	45.0	100
ZLM-15.8AD	12.0 × 15.8	27.0	55.0	100
ZLM-18.5AD	14.3 × 18.5	35.0	65.0	100
ZLM-21.2AD	17.0 × 21.2	40.0	75.0	100
ZLM-25.5AD	21.0 × 25.5	43.0	85.5	100
ZLM-28.5AD	23.0 × 28.5	47.0	100.0	50
ZLM-34.5AD	29.0 × 34.5	58.0	120.0	50
ZLM-42.5AD	36.0 × 42.5	69.0	150.0	50
ZLM-54.5AD	48.0 × 54.5	83.0	190.0	25

PE Polyethylene corrugated pipe

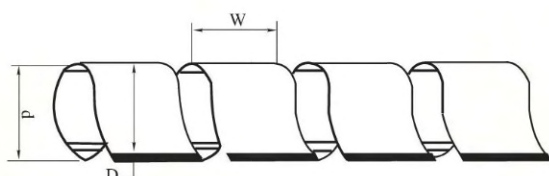
Thread	int. x ext.(mm)	Dimensions mm ± 10%		Lengths in rings m/roll
		Stat	Dyn	
ZLM-10ADPE	6.5 × 10.0	13.0	33.0	100
ZLM-11.6ADPE	8.00 × 11.6	15.0	37.0	100
ZLM-13ADPE	9.50 × 13.0	18.0	41.0	100
ZLM-15.8ADPE	12.0 × 15.8	22.0	50.0	100
ZLM-18.5ADPE	14.3 × 18.5	33.0	61.0	100
ZLM-21.2ADPE	17.0 × 21.2	38.0	72.0	100
ZLM-25.5ADPE	21.0 × 25.5	40.0	80.0	100
ZLM-28.5ADPE	23.0 × 28.5	44.0	92.0	50
ZLM-34.5ADPE	29.0 × 34.5	53.0	113.0	50
ZLM-42.5ADPE	36.0 × 42.5	61.0	140.0	50
ZLM-54.5ADPE	48.0 × 54.5	78.0	180.0	25

PP Polypropylene corrugated pipe

Thread	int. x ext.(mm)	Dimensions mm \pm 10%		Lengths in rings m/roll
		Stat	Dyn	
ZLM-10ADPP	6.5 x 10.0	16.0	37.0	100
ZLM-11.6ADPP	8.00 x 11.6	18.0	43.0	100
ZLM-13ADPP	9.50 x 13.0	21.0	48.0	100
ZLM-15.8ADPP	12.0 x 15.8	26.0	56.0	100
ZLM-18.8ADPP	14.3 x 18.5	37.0	70.0	100
ZLM-21.2ADPP	17.0 x 21.2	44.0	79.0	100
ZLM-25.5ADPP	21.0 x 25.5	49.0	88.0	100
ZLM-28.5ADPP	23.0 x 28.5	52.0	104.0	50
ZLM-34.5ADPP	29.0 x 34.5	58.0	123.0	50
ZLM-42.5ADPP	36.0 x 42.5	68.0	152.0	50
ZLM-54.5ADPP	48.0 x 54.5	84.0	193.0	25

Spiral Wrapping Bands

- ◆ Material: made from PE.
- ◆ Usage: fix one end with safety belt first, then circle the wires clockwise to make them tighen.
- ◆ Application: a protection wear for electric wires, and make them insulation and look nice.



Item NO.	(D) (mm)	(D) (mm)	(W) (mm)	Wrapping Range (mm)	Packing
ZLM-03SWB	1.5	3.0	4.0	1.5-10	10M/ROLL
ZLM-06SWB	4	6	7.0	4-50	
ZLM-08SWB	6	8	10.8	6-60	
ZLM-10SWB	7.5	10	11.4	7.5-60	
ZLM-12SWB	9	12	13.9	9-65	
ZLM-15SWB	12	15	15.0	12-75	
ZLM-19SWB	15	19	18.2	15-100	
ZLM-24SWB	20	24	19.6	20-130	
ZLM-30SWB	26	30	43.0	26-150	

Spiral Cable Zip Wrap



Spiral Cable Zip Wrap

- ◆Material: made from PE.
- ◆Application: a protection wear for electric wires, and make them insulation and look nice.



Item NO.	(mm)	Packing
ZLM-15A	15	2M or 10M
ZLM-20A	20	
ZLM-25A	25	
ZLM-30A	30	

Flat Cable Markers

- ◆Material: made from PVC, oil and erosion control.
- ◆Feature: used for circle of flat wire size from 3.5mm-7.0mm.



Item NO.	Approx Wire		Markers	Packing
	SQ(mm ²)	mm		
ZLM-J-EC	2~8	0.5~7.0	0~9 A~Z + - / \	500PCS/ROLL

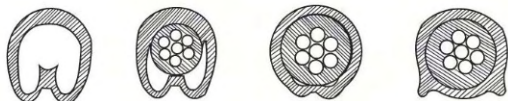


Cable Markers Strips

Item NO.	(L) (mm)	(W) (mm)	Packing
ZLM-65CMS	65	10	100
ZLM-90CMS	90	10	100
ZLM-130CMS	130	10	100

Cable Markers

- ◆ Material: made from PVC, oil and erosion control, heat resisting up to 85oC.
- ◆ Struction: the inside is hollow, but elastic, The diameter can change with the needed wire.



Item NO.	Approx Wire		Markers	Packing
	SQ(mm ²)	mm		
ZLM-0EC	0.75~1.5	2.0~3.2	0~9 A~Z + - / \	1000PCS/ROLL
ZLM-1EC	0.75~3.5	3.0~4.2		1000PCS/ROLL
ZLM-2EC	3.5~8.0	3.6~7.4		500PCS/ROLL
ZLM-3EC	5.2~10.0	5.2~10.0		350PCS/ROLL
ZLM-4EC	8~22	6.2~10.0		250PCS/ROLL



Cable Markers

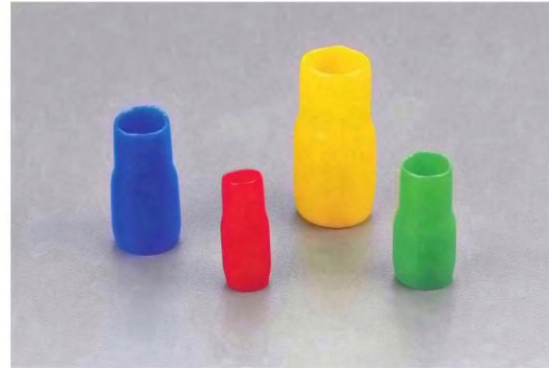
Item NO.	Approx Wire		Markers	Packing
	SQ(mm ²)	mm		
ZLM-0MEC	0.75~1.5	2.0~3.2	0~9 A~Z + - / \	450PCS/ROLL
ZLM-1MEC	0.75~3.5	3.0~4.2		400PCS/ROLL
ZLM-2MEC	3.5~8.0	3.6~7.4		300PCS/ROLL
ZLM-3MEC	5.2~10.0	5.2~10.0		250PCS/ROLL

Vinyl Wire End Caps



Vinyl Wire End Caps

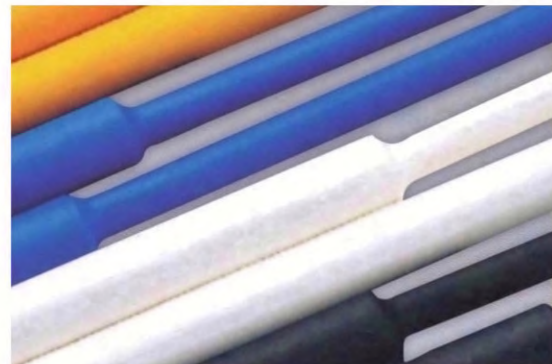
- ◆ Material: Made from PVC.
- ◆ Usage: divide the colorful cable in machine, used to various terminals as soft feature, easy to take off.
- ◆ Character: clearly color, shine, soft, insulated.
- ◆ Color: red white blue yellow ,black green, brown available upon special request.



Item NO.	SQ(mm ²)	Dimension		Packing	
		D1(mm)	D2(mm)		
ZLM-1.25VWEC	1.25	3.3	3.1	100PCS	
ZLM-2VWEC	2	4.5	3.7		
ZLM-3.5VWEC	3.5	5.7	4.1		
ZLM-5.5VWEC	5.5	5.7	5.2		
ZLM-8VWEC	8	7.2	6.2		
ZLM-14VWEC	14	10.0	8.0		
ZLM-22VWEC	22	12.0	9.5		
ZLM-38VWEC	38	14.0	11.8		
ZLM-60VWEC	60	16.8	13.5		
ZLM-80VWEC	80	19.0	16.0		
ZLM-100VWEC	100	22.0	18.0	50PCS	
ZLM-125VWEC	125	24.0	20.0		
ZLM-150VWEC	150	24.4	22.0		
ZLM-200VWEC	200	32.0	24.0		
ZLM-250VWEC	250	38.0	26.5	25PCS	
ZLM-325VWEC	325	38.0	29.0		
ZLM-400VWEC	400	44.0	37.0		
ZLM-500VWEC	500	45.0	40.4		
ZLM-600VWEC	630	52.0	45.0		

Heat Shrinkable Tubings

- ◆ Function:
 1. wire coat and insulation.
 2. make the joint of terminal block and wire insulated.
 3. divide the colors.
 4. water-proof.
 5. protection and insulation of insisters and electrical capacitors.
- ◆ Standard color : black, white, red, blue, yellow, green, brown, grey, orange and purple.



Heat Shrinkable Tubings

www.zlami.eu

Item NO.	Supplied		After Shrinkang		Packing (m/roll)
	D (mm)	Thickness(mm)	D (mm)	Thickness(mm)	
ZLM-1HST	1.0	0.2 ± 0.05	0.5	0.4 ± 0.05	200m/roll
ZLM-1.5HST	1.5	0.2 ± 0.05	0.75	0.4 ± 0.05	
ZLM-2HST	2.0	0.25 ± 0.05	1.0	0.45 ± 0.1	
ZLM-2.5HST	2.5	0.25 ± 0.05	1.25	0.45 ± 0.1	
ZLM-3HST	3.0	0.25 ± 0.05	1.5	0.45 ± 0.1	
ZLM-3.5HST	3.5	0.25 ± 0.05	1.75	0.45 ± 0.1	
ZLM-4.5HST	4.0	0.25 ± 0.05	2.0	0.45 ± 0.1	
ZLM-5HST	5.0	0.35 ± 0.05	2.5	0.55 ± 0.1	100m/roll
ZLM-6HST	6.0	0.35 ± 0.05	3.0	0.55 ± 0.1	
ZLM-7HST	7.0	0.35 ± 0.05	3.5	0.55 ± 0.1	
ZLM-8HST	8.0	0.35 ± 0.05	4.0	0.55 ± 0.1	
ZLM-9HST	9.0	0.35 ± 0.05	4.5	0.55 ± 0.1	
ZLM-10HST	10.0	0.35 ± 0.05	5.0	0.60 ± 0.1	
ZLM-11HST	11.0	0.35 ± 0.05	5.5	0.60 ± 0.1	
ZLM-12HST	12.0	0.35 ± 0.1	6.0	0.70 ± 0.1	
ZLM-13HST	13.0	0.35 ± 0.1	6.5	0.70 ± 0.1	
ZLM-14HST	14.0	0.35 ± 0.1	7.0	0.70 ± 0.1	
ZLM-15HST	15.0	0.35 ± 0.1	7.5	0.70 ± 0.1	
ZLM-16HST	16.0	0.35 ± 0.1	8.0	0.70 ± 0.1	
ZLM-18HST	18.0	0.4 ± 0.1	9.0	0.80 ± 0.1	
ZLM-20HST	20.0	0.5 ± 0.1	10.0	0.90 ± 0.1	
ZLM-22HST	22.0	0.5 ± 0.1	11.0	0.90 ± 0.1	
ZLM-25HST	25.0	0.5 ± 0.1	12.5	0.90 ± 0.1	50m/roll
ZLM-28HST	28.0	0.5 ± 0.1	14.0	0.90 ± 0.1	25m/roll
ZLM-30HST	30.0	0.5 ± 0.1	15.0	1.00 ± 0.2	
ZLM-35HST	35.0	0.5 ± 0.1	17.5	1.00 ± 0.2	
ZLM-40HST	40.0	0.5 ± 0.1	20.0	1.00 ± 0.2	
ZLM-50HST	50.0	0.5 ± 0.1	25.0	1.00 ± 0.2	
ZLM-60HST	60.0	0.6 ± 0.1	30.0	1.20 ± 0.2	
ZLM-70HST	70.0	0.6 ± 0.1	35.0	1.20 ± 0.2	
ZLM-80HST	80.0	0.6 ± 0.1	40.0	1.20 ± 0.2	
ZLM-90HST	90.0	0.6 ± 0.1	45.0	1.30 ± 0.2	
ZLM-100HST	100.0	0.7 ± 0.1	50.0	1.30 ± 0.2	
ZLM-120HST	120	0.7 ± 0.1	60.0	1.30 ± 0.2	
ZLM-150HST	150	0.8 ± 0.1	75.0	1.60 ± 0.2	

ZLAEI MI



Insulated Terminals

Copper Tube Terminals

Insulated Disconnects

Insulated Butt Connectors

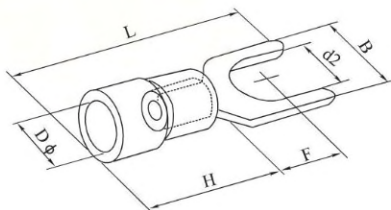


Living on quality, Developing on credit.

Insulated Spade Terminals

www.zlami.eu

Insulated Spade Terminals

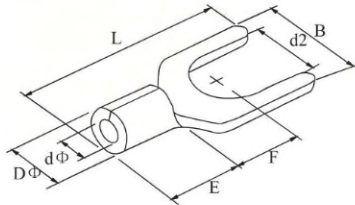


	Item NO.		screw dia. d2(mm)	Dimension					Color
				B (mm)	L (mm)	F (mm)	H (mm)	D φ (mm)	
0.5~1.5mm ² (22-16) I _{max} =19A	ZM1.25/3IST	#4	3.2	5.7	21.2	6.5	10.0	4.3	Red
	ZM1.25/3.5ISTS	#6	3.7	5.7	21.2	6.5			
	ZM1.25/3.5ISTL	#6	3.7	6.4	21.2	6.5			
	ZM1.25/4ISTS	#8	4.3	6.4	21.2	6.5			
	ZM1.25/4ISTM	#8	4.3	7.2	21.2	6.5			
	ZM1.25/4ISTL	#8	4.3	8.1	21.2	6.5			
	ZM1.25/5ISTS	#10	5.3	8.1	21.2	6.5			
	ZM1.25/5ISTL	#10	5.3	9.5	21.2	6.5			
	ZM1.25/6ISTS	1/4	6.5	9.5	21.2	6.5			
	ZM1.25/6ISTL	1/4	6.5	12.0	21.2	11.0			
1.5~2.5mm ² (16~14) I _{max} =27A	ZM2/3IST	#4	3.2	5.7	21.2	6.5	10.0	4.9	blue
	ZM2/3.5ISTS	#6	3.7	5.7	21.2	6.5			
	ZM2/3.5ISTL	#6	3.7	6.4	21.2	6.5			
	ZM2/4ISTS	#8	4.3	6.0	21.2	6.5			
	ZM2/4ISTM	#8	4.3	7.2	21.2	6.5			
	ZM2/4ISTL	#8	4.3	8.1	21.2	6.5			
	ZM2/5ISTS	#10	5.3	8.1	21.2	6.5			
	ZM2/5ISTL	#10	5.3	9.5	21.2	6.5			
	ZM2/6ISTS	1/4	6.5	9.5	21.2	6.5			
	ZM2/6ISTL	1/4	6.5	12.0	21.2	11.0			
2.5~4mm ² (14~12) I _{max} =37A	ZM3.5/4IST	#8	4.3	8.0	24.8	7.0	12.5	6.2	black
	ZM3.5/5IST	#10	5.3	8.0	24.8	7.0			
	ZM3.5/6IST	1/4	6.5	12.0	28.0	12.1			
4~6mm ² (12~10) I _{max} =48A	ZM5.5/3.5IST	#6	3.7	8.3	25.2	7.5	12.5	6.7	yellow
	ZM5.5/4ISTS	#8	4.3	8.3	25.2	7.5			
	ZM5.5/4ISTL	#8	4.3	9.0	23.9	7.5			
	ZM5.5/5IST	#10	5.3	9.0	23.9	7.5			
	ZM5.5/6ISTS	1/4	6.5	9.0	23.9	7.5			
	ZM5.5/6ISTL	1/4	6.5	12.0	31.2	12.0			
ZM5.5/8IST	5/16	8.4	14.0	30.0	11.5				

Spade Naked Terminal

www.zlami.eu

Spade Naked Terminal

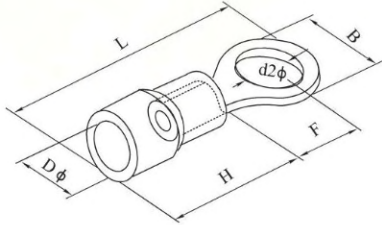


	Item NO.	USA screw	screw dia. d2(mm)	Dimension					
				B (mm)	L (mm)	F φ (mm)	E φ (mm)	D φ (mm)	d φ (mm)
0.5~1.5mm ² I _{max} =19A	ZM1.25/3SNT	#4	3.2	5.7	16.0	6.5	4.8	3.4	1.7
	ZM1.25/3.5SNTS	#6	3.7	5.7	16.0	6.5			
	ZM1.25/3.5SNTL	#6	3.7	6.4	16.0	6.5			
	ZM1.25/4SNTS	#8	4.3	6.4	16.0	6.5			
	ZM1.25/4SNTM	#8	4.3	7.2	16.0	6.5			
	ZM1.25/4SNTL	#8	4.3	8.1	16.0	6.5			
	ZM1.25/5SNTS	#10	5.3	8.1	16.0	6.5			
	ZM1.25/5SNTL	#10	5.3	9.5	16.0	6.5			
	ZM1.25/6SNTS	1/4	6.4	9.5	16.0	6.5			
	ZM1.25/6SNTL	1/4	6.4	12.0	22.0	11.0			
1.5~2.5mm ² I _{max} =27A	ZM2/3SNT	#4	3.2	5.7	16.0	6.5	4.8	4.1	2.3
	ZM2/3.5SNTS	#6	3.7	5.7	16.0	6.5			
	ZM2/3.5SNTL	#6	3.7	6.4	16.0	6.5			
	ZM2/4SNTS	#8	4.3	6.4	16.0	6.5			
	ZM2/4SNTM	#8	4.3	7.2	16.0	6.5			
	ZM2/4SNTL	#8	4.3	8.1	16.0	6.5			
	ZM2/5SNTS	#10	5.3	8.1	16.0	6.5			
	ZM2/5SNTL	#10	5.3	9.5	16.0	6.5			
	ZM2/6SNTS	1/4	6.4	9.5	16.0	6.5			
	ZM2/6SNTL	1/4	6.4	12.0	22.0	11.0			
2.5~4mm ² I _{max} =37A	ZM3.5/3SNT	#4	3.2	5.7	18.3	7.0	6.0	5.0	3.0
	ZM3.5/4SNT	#8	4.3	8.0	18.3	7.0			
	ZM3.5/5SNT	#10	5.3	8.0	18.3	7.0			
	ZM3.5/6SNT	1/4	6.4	12.0	21.5	12.1			
4~6mm ² I _{max} =48A	ZM5.5/3.5SNT	#8	3.7	8.3	19.5	7.5	6.8	5.6	3.4
	ZM5.5/4SNTS	#10	4.3	8.3	19.5	7.5			
	ZM5.5/4SNTL	#8	4.3	9.0	19.5	7.5			
	ZM5.5/5SNT	#10	5.3	9.0	19.5	7.5			
	ZM5.5/6SNTS	1/4	6.4	9.0	19.5	7.5			
	ZM5.5/6SNTL	1/4	6.4	12.0	25.5	12.0			
	ZM5.5/8SNT	5/16	8.4	14.0	24.5	11.5			
6~10mm ² I _{max} =62A	ZM8/4SNT	#8	4.3	8.7	23.0	6.0	8.5	7.2	4.5
	ZM8/5SNT	#10	5.3	12.0	24.5	5.7	8.5	7.2	4.5
	ZM8/6SNT	1/4	6.4	12.0	24.5	5.7	8.5	7.2	4.5
	ZM8/8SNT	5/16	8.4	14.5	28.0	8.3	8.5	7.2	4.5
	ZM14/6SNT	1/4	6.4	12.0	28.0	7.5	10.5	9.0	5.8
	ZM14/8SNT	5/16	8.4	14.0	28.0	7.5	10.5	9.0	5.8
	ZM22/8SNT	5/16	8.4	14.0	34.5	9.0	12.0	11.5	7.7

Insulated Ring Terminals



Insulated Ring Terminals

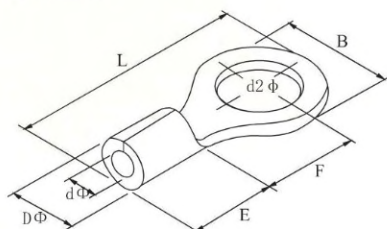


	Item NO.		screw dia. d2(mm)	Dimension					Color
				B (mm)	L (mm)	F (mm)	H (mm)	D φ (mm)	
0.5~1.5mm ² (22-16) I _{max} =19A	ZM1.25/3IRT	#4	3.2	5.7	17.8	4.95	10.0	4.3	Red
	ZM1.25/3.5IRTS	#6	3.7	5.7	17.8	4.95			
	ZM1.25/3.5IRTM	#6	3.7	6.6	20.1	6.3			
	ZM1.25/3.5IRTL	#6	3.7	8.0	21.5	7.0			
	ZM1.25/4IRTS	#8	4.3	6.6	20.1	6.3			
	ZM1.25/4IRTL	#8	4.3	8.0	21.5	7.0			
	ZM1.25/5IRT	#10	5.3	8.0	21.5	7.0			
	ZM1.25/6IRT	1/4	6.5	11.6	27.5	11.1			
	ZM1.25/8IRT	5/16	8.4	11.6	27.5	11.1			
	ZM1.25/10IRT	3/8	10.5	13.6	31.6	13.9			
1.5~2.5mm ² (16~14) I _{max} =27A	ZM2/3IRT	#4	3.2	6.6	17.8	4.3	10.0	4.9	blue
	ZM2/3.5IRTS	#6	3.7	6.6	17.8	4.3			
	ZM2/3.5IRTM	#6	3.7	6.6	21.0	7.0			
	ZM2/3.5IRTL	#6	3.7	8.5	22.5	7.75			
	ZM2/4IRTS	#8	4.3	6.6	21.0	7.0			
	ZM2/4IRTL	#8	4.3	8.5	22.5	7.75			
	ZM2/5IRTS	#10	5.3	8.5	22.5	7.75			
	ZM2/5IRTL	#10	5.3	9.5	22.5	7.25			
	ZM2/6IRT	1/4	6.5	12.0	27.6	11.0			
	ZM2/8IRT	5/16	8.4	12.0	27.6	11.0			
ZM2/10IRT	3/8	10.5	13.6	30.2	13.9				
2.5~4mm ² (14~12) I _{max} =37A	ZM3.5/4IRT	#8	4.3	8.0	24.5	7.7	12.5	6.2	black
	ZM3.5/5IRTS	#10	5.3	8.0	24.5	7.7			
	ZM3.5/5IRTL	#10	5.3	12.0	27.9	7.7			
	ZM3.5/6IRT	1/4	6.5	12.0	27.9	7.7			
4~6mm ² (12~10) I _{max} =48A	ZM5.5/3.5IRT	#6	3.7	7.2	21.4	5.9	12.5	6.7	yellow
	ZM5.5/4IRTS	#8	4.3	7.2	21.5	5.9			
	ZM5.5/4IRTL	#8	4.3	9.5	25.5	8.3			
	ZM5.5/5IRT	#10	5.3	9.5	25.5	8.3			
	ZM5.5/6IRT	1/4	6.5	12.0	31.5	13.0			
	ZM5.5/8IRT	5/16	8.4	15.0	33.7	13.7			
	ZM5.5/10IRT	3/8	10.5	15.0	33.7	13.7			
ZM5.5/12IRT	1/2	13.0	19.2	38.1	16.0				

Ring Naked Terminal

www.zlami.eu

Ring Naked Terminal

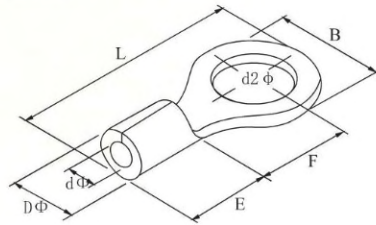


	Item NO.	USA screw	screw dia. d2(mm)	Dimension					
				B(mm)	L(mm)	F φ (mm)	E φ (mm)	D φ (mm)	d φ (mm)
0.5~1.5mm ² I _{max} =19A	ZM1.25/3RNT	#4	3.2	5.7	12.6	4.95	4.8	3.4	1.7
	ZM1.25/3.5RNTS	#6	3.7	5.7	12.6	4.95			
	ZM1.25/3.5RNTM	#6	3.7	6.6	14.4	6.3			
	ZM1.25/3.5RNTL	#6	3.7	8.0	15.8	7.0			
	ZM1.25/4RNTS	#8	4.3	6.6	14.4	6.3			
	ZM1.25/4RNTL	#8	4.3	8.0	15.8	7.0			
	ZM1.25/5RNT	#10	5.3	8.0	15.8	7.0			
	ZM1.25/6RNT	1/4	6.4	11.6	21.8	11.1			
	ZM1.25/8RNT	5/16	8.4	11.6	21.8	11.1			
	ZM1.25/10RNT	3/8	10.5	13.6	25.5	13.6			
1.5~2.5mm ² I _{max} =27A	ZM2/3RNT	#4	3.2	6.6	12.3	4.3	4.8	4.1	2.3
	ZM2/3.5RNTS	#6	3.7	6.6	12.3	4.3			
	ZM2/3.5RNTM	#6	3.7	6.6	16.0	7.0			
	ZM2/3.5RNTL	#6	3.7	8.5	16.8	7.75			
	ZM2/4RNTS	#8	4.3	6.6	16.0	7.0			
	ZM2/4RNTL	#8	4.3	8.5	16.8	7.75			
	ZM2/5RNTS	#10	5.3	8.5	16.8	7.75			
	ZM2/5RNTL	#10	5.3	9.5	16.8	7.25			
	ZM2/6RNT	1/4	6.4	12.0	21.8	11.0			
	ZM2/8RNT	5/16	8.4	12.0	21.8	11.0			
	ZM2/10RNT	3/8	10.5	13.6	25.5	13.9			
	ZM2/12RNT	1/2	13.0	19.2	31	16.5			
2.5~4mm ² I _{max} =37A	ZM3.5/4RNT	#8	4.3	8.0	18.0	7.7	6.0	5.0	3.0
	ZM3.5/5RNTS	#10	5.3	8.0	18.0	7.7			
	ZM3.5/5RNTL	#10	5.3	12.0	21.4	7.7			
	ZM3.5/6RNT	1/4	6.4	12.0	21.4	7.7			
4~6mm ² I _{max} =48A	ZM5.5/3.5RNT	#6	3.7	7.2	15.7	5.9	6.8	5.6	3.4
	ZM5.5/4RNTS	#8	4.3	7.2	15.7	5.9			
	ZM5.5/4RNTL	#8	4.3	9.5	19.8	8.3			
	ZM5.5/5RNT	#10	5.3	9.5	19.8	8.3			
	ZM5.5/6RNT	1/4	6.4	12.0	25.8	13.0			
	ZM5.5/8RNT	5/16	8.4	15.0	28.0	13.7			
	ZM5.5/10RNT	3/8	10.5	15.0	28.0	13.7			
ZM5.5/12RNT	1/2	13.0	19.2	32.4	16.0				

Ring Naked Terminal

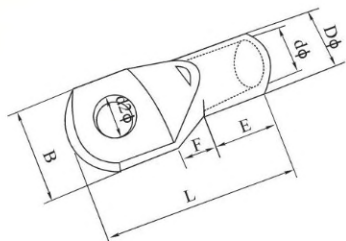


Ring Naked Terminal



	Item NO.	USA screw	screw dia. d2(mm)	Dimension					
				B(mm)	L(mm)	F φ (mm)	E φ (mm)	D φ (mm)	d φ (mm)
6~10mm ² I _{max} =62A	ZM8/4RNT	#8	4.3	8.8	23.8	9.3	8.5	7.2	4.5
	ZM8/5RNTS	#10	5.3	8.8	23.8	11.1			
	ZM8/5RNTM	#10	5.3	12.0	23.8	9.3			
	ZM8/5RNTL	#10	5.3	15.0	29.8	13.8			
	ZM8/6RNTS	1/4	6.4	12.0	23.8	9.3			
	ZM8/6RNTL	1/4	6.4	15.0	29.8	13.8			
	ZM8/8RNT	5/16	8.4	15.0	29.8	13.8			
	ZM8/10RNT	3/8	10.5	15.0	29.38	13.8			
	ZM8/12RNT	1/2	13.0	20.0	33.5	15.0			
10~16mm ² I _{max} =88A	ZM14/4RNT	#8	4.3	12.0	29.8	13.3	10.5	9.0	5.8
	ZM14/5RNT	#10	5.3	12.0	29.8	13.3			
	ZM14/6RNTS	1/4	6.4	12.0	29.8	13.3			
	ZM14/6RNTL	1/4	6.4	16.0	32.8	13.3			
	ZM14/8RNT	5/16	8.4	16.0	32.8	14.5			
	ZM14/10RNT	3/8	10.5	16.0	32.8	14.5			
	ZM14/12RNT	1/2	13.0	22.0	41.0	19.5			
16~25mm ² I _{max} =115A	ZM22/5RNTS	#10	5.3	12.2	33.2	14.5	12.0	11.5	7.7
	ZM22/5RNTL	#10	5.3	16.5	33.7	13.5			
	ZM22/6RNTS	1/4	6.4	12.2	33.2	14.5			
	ZM22/6RNTL	1/4	6.4	6.5	33.7	13.5			
	ZM22/8RNT	5/16	8.4	16.5	33.7	13.5			
	ZM22/10RNT	3/8	10.5	16.5	33.7	13.5			
	ZM22/11RNT	7/16	11.5	22.0	42.5	19.5			
	ZM22/12RNT	1/2	13.0	22.0	42.5	19.5			
35~50mm ² I _{max} =160A	ZM38/5RNTS	#10	5.3	15.3	39.0	18.3	14.0	13.3	9.4
	ZM38/5RNTL	1/4	6.4	15.3	39.0	18.3			
	ZM38/8RNTS	5/16	8.4	15.3	39.0	18.3			
	ZM38/8RNTL	5/16	8.4	22.0	42.7	17.7			
	ZM38/10RNTS	3/8	10.5	15.3	39.0	18.3			
	ZM38/10RNTL	3/8	10.5	22.0	42.7	17.7			
	ZM38/11RNT	7/16	11.5	22.0	42.7	17.7			
	ZM38/12RNT	1/2	13.0	22.0	42.7	17.7			

Cable Lugs

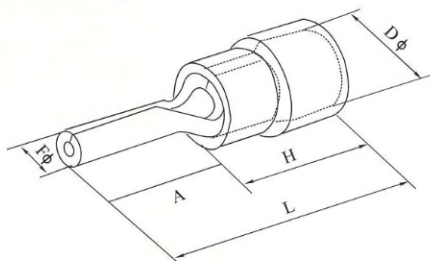


Item NO.	screw dia. d2(mm)	Dimension					Cinle Sq
		d φ (mm)	D φ (mm)	B(mm)	E(mm)	L(mm)	
ZM1.5/5CL	5.2	1.8	3.7	8.0	6.5	16	1.5
ZM2.5/4CL	4.2	2.4	4.0	8.0	7.0	18	2.5
ZM2.5/5CL	5.2			10.0	7.0	20	
ZM4/5CL	5.2	3.1	4.8	10	7.5	20	4
ZM4/6CL	6.5						
ZM6/5CL	5.2	3.8	5.5	10	8.0	23	6
ZM6/6CL	6.5			12			
ZM10/6CL	6.5	4.5	6.2	12	9.0	25	10
ZM10/8CL	8.4						
ZM16/6CL	6.5	5.4	7.1	12	11.0	30	16
ZM16/8CL	8.4						
ZM25/6CL	6.5	6.8	8.8	13	13.5	33	25
ZM25/8CL	8.4			18			
ZM35/8CL	8.4	8.2	10.6	15.3	14.5	38	35
ZM35/10CL	10.5			18			
ZM50/8CL	8.4	9.5	12.4	17.8	17	45	50
ZM50/10CL	10.5						
ZM70/10CL	10.5	11.2	14.7	21.0	19.5	50	70
ZM70/12CL	13.0						
ZM95/10CL	10.5	13.5	17.4	25	23.5	55	95
ZM95/12CL	13						
ZM120/12CL	13	15	19.4	28	26	63	120
ZM120/16CL	17						
ZM150/12CL	13	16.5	21.2	30	29	70	150
ZM150/16CL	17						
ZM185/16CL	17	18.5	23.5	34	33	75	185
ZM240/16CL	17						
ZM240/20CL	21	21	26.5	38	40	90	240
ZM300/16CL	17						
ZM300/20CL	21	23.5	30	43	44	98	300
ZM400/16CL	17						
ZM400/20CL	21	28.5	36.5	50.1	46	110	400
ZM500/16CL	17						
ZM500/20CL	21	30	39	56	50	120	500
ZM630/20CL	21						
ZM800/BLCL	-	39	50.6	73.5	60	170	800
ZM1000/BLCL	-	43	56.2	81	87	200	1000

Insulated Pin Terminals



Insulated Pin Terminals



0.5~1.5mm²(22-16)

I_{max}=19A

Item NO.	Dimension				Color
	F φ (mm)	L (mm)	H (mm)	D φ (mm)	
ZM1.25/9IPT	1.9	19.0	10.0	4.3	Red
ZM1.25/10IPT	1.9	20.0			
ZM1.25/12IPT	1.9	22.0			
ZM1.25/13IPT	1.9	23.0			
ZM1.25/18IPT	1.9	28.0			

1.5~2.5mm²(16~14)

I_{max}=27A

Item NO.	Dimension				Color
	F φ (mm)	L (mm)	H (mm)	D φ (mm)	
ZM2/9IPT	1.9	19.0	10.0	4.9	Blue
ZM2/10IPT	1.9	20.0			
ZM2/12IPT	1.9	22.0			
ZM2/13IPT	1.9	23.0			
ZM2/18IPT	1.9	28.0			

4~6mm²(12~10)

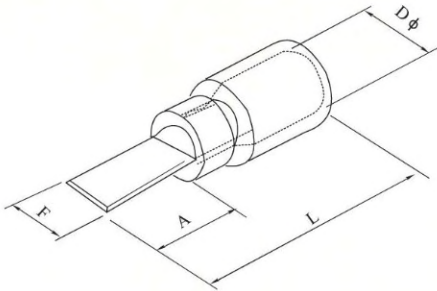
I_{max}=48A

Item NO.	Dimension				Color
	F φ (mm)	L (mm)	H (mm)	D φ (mm)	
ZM5.5/13IPT	2.8	25.5	12.5	6.7	yellow

Insulated Chip-shaped Terminals

www.zlami.eu

Insulated Chip-shaped Terminals



0.5~1.5mm²(22~16)

I_{max}=19A

Item NO.	Dimension			
	F(mm)	L (mm)	A(mm)	D(mm)
ZM1.25/10ICST	2.3	20.0	10.0	4.3
ZM1.25/11ICST	3.0	21.0	11.0	
ZM1.25/14ICST	3.0	24.0	14.0	
ZM1.25/18ICST	2.3	28.0	18.0	

1.5~2.5mm²(16~14)

I_{max}=19A

Item NO.	Dimension			
	F(mm)	L (mm)	A(mm)	D(mm)
ZM2/9ICST	2.8	19.0	9.0	4.9
ZM2/15ICST	2.3	25.0	15.0	
ZM2/18ICST	2.3	28.0	18.0	

4~6mm²(12~10)

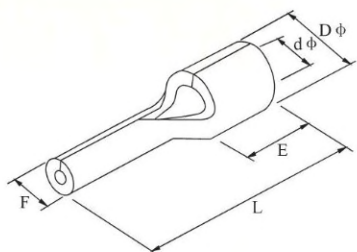
I_{max}=48A

Item NO.	Dimension			
	F(mm)	L (mm)	A(mm)	D(mm)
ZM5.5/10ICST	2.8	22.5	10.0	5.6

Pin-shaped Naked Terminal



Pin-shaped Naked Terminal



0.5~1.5mm²

I_{max}=19A

Item NO.	Dimension				
	F φ (mm)	L (mm)	E (mm)	D φ (mm)	d φ (mm)
ZM1.25/9PSNT	1.9	13.8	4.8	3.4	1.7
ZM1.25/10PSNT	1.9	14.8			
ZM1.25/12PSNT	1.9	16.8			
ZM1.25/13PSNT	1.9	17.8			
ZM1.25/18PSNT	1.9	22.8			

1.5~2.5mm²

I_{max}=27A

Item NO.	Dimension				
	F φ (mm)	L (mm)	E (mm)	D φ (mm)	d φ (mm)
ZM2/9PSNT	1.9	13.8	4.8	4.1	2.3
ZM2/10PSNT	1.9	14.8			
ZM2/12PSNT	1.9	16.8			
ZM2/13PSNT	1.9	17.8			

2.5~4mm²

I_{max}=37A

Item NO.	Dimension				
	F φ (mm)	L (mm)	E (mm)	D φ (mm)	d φ (mm)
ZM3.5/10PSNT	2.8	14.8	4.8	4.1	2.3
ZM3.5/13PSNT	2.8	19.5			

4~6mm²

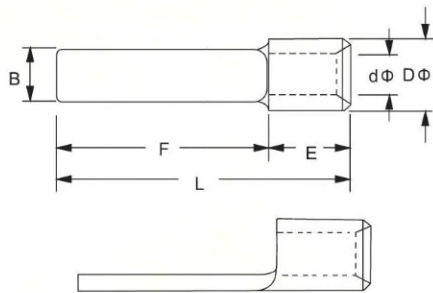
I_{max}=47A

Item NO.	Dimension				
	F φ (mm)	L (mm)	E (mm)	D φ (mm)	d φ (mm)
ZM5.5/13PSNT	2.8	19.8	6.0	5.6	3.4

Chip-shaped Naked Terminals

www.zlami.eu

Chip-shaped Naked Terminals



0.5~1.5mm²

I_{max}=19A

Item NO.	Dimension					
	B (mm)	L (mm)	F φ (mm)	E (mm)	D φ (mm)	d φ (mm)
ZM1.25/10CSNT	2.3	14.8	10.0	4.8	3.4	1.7
ZM1.25/11CSNT	3.0	15.8	11.0			
ZM1.25/14CSNT	3.0	18.8	14.0			
ZM1.25/18CSNT	2.3	22.8	18.0			

1.5~2.5mm²

I_{max}=27A

Item NO.	Dimension					
	B (mm)	L (mm)	F φ (mm)	E (mm)	D φ (mm)	d φ (mm)
ZM2/9CSNT	2.3	13.8	9.0	4.8	4.1	2.3
ZM2/18CSNT	2.3	22.8	18.0			

4~6mm²

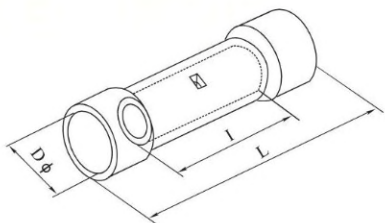
I_{max}=48A

Item NO.	Dimension					
	B (mm)	L (mm)	F φ (mm)	E (mm)	D φ (mm)	d φ (mm)
ZM5.5/10CSNT	2.8	14.8	10.0	6.0	5.6	3.4
ZM5.5/14CSNT	4.5	21.0	14.0			
ZM5.5/18CSNT	4.5	23.0	18.0			
ZM8/14CSNT	5.0	22.5	14.0	8.5	7.2	4.5
ZM14/16CSNT	6.0	30.6	16.0	14.0	9.0	6.5

Insulated Butt Connectors



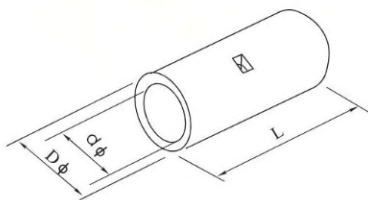
Insulated Butt Connectors



INSULATED BUTT CONNECTORS

Item NO.	C/nle Sq		Dimension			Imax	Insulation Color
	A.W.G	mm ²	l (mm)	D φ (mm)	L (mm)		
ZM1.25IBC	22~16	0.5~1.5	15.0	1.7	26.0	19A	Red
ZM2IBC	16~14	1.5~2.5	15.0	2.3	26.0	27A	blue
ZM5.5IBC	12~10	4~6	15.0	3.4	26.0	48A	yellow
ZM8IBC	#8	6~10	21.0	4.5	32.0	62A	red
ZM14IBC	#6	10~16	26.0	5.8	42.0	88A	blue
ZM22IBC	#4	16~25	29.0	7.7	50.0	115A	yellow
ZM38IBC	#2	35~50	32.0	9.4	55.0	160A	red

Naked Terminal In The Middle



BUTT CONNECTORS



Item NO.	dimension			Wire Range	
	L(mm)	D(mm)	d(mm)	A.W.G	mm ²
ZM1.25BT	15.0	3.3	1.7	22-16	0.5-1.5
ZM2BT	15.0	4.0	2.3	16-14	1.5-2.5
ZM3.5BT	15.0	5.0	3.0	14-12	2.5-4
ZM5.5BT	15.0	5.5	3.4	12-10	4-6
ZM8BT	21.0	7.1	4.5	#8	10
ZM14BT	26.0	9.0	5.8	#6	16
ZM22BT	29.0	11.4	7.7	#4	25
ZM38BT	32.0	13.3	9.4	#2	35
ZM60BT	36.0	15.4	11.4	1/0	50
ZM70BT	37.0	17.5	13.3	2/0	70
ZM80BT	38.0	19.4	14.5	3/0	95
ZM100BT	38.0	22.0	16.4	4/0	120
ZM150BT	54.0	26.5	19.5	250-300MCM	150
ZM180BT	57.0	28.5	21.0	300-350MCM	185
ZM200BT	63.0	32.5	24.0	400MCM	240
ZM325BT	72.0	37.0	28.0	500-600MCM	300

Naked Terminal In The Middle



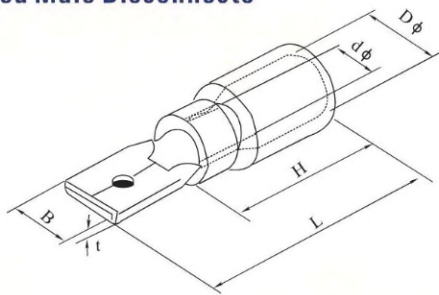
Naked Terminal In The Middle

Item NO.	dimension			Wire Range	
	L(mm)	D(mm)	d(mm)	A.W.G	mm ²
ZM1.5NTIM	18.0	3.5	2.5	22-16	0.5-1.5
ZM2.5NTIM	20.0	4.0	3.0	16-14	1.5-2.5
ZM4NTIM	22.0	5.0	3.8	14-12	2.5-4
ZM6NTIM	23.0	5.5	4.3	12-10	4-6
ZM10NTIM	25.0	6.5	5.3	#8	10
ZM16NTIM	30.0	8.0	6.6	#6	16
ZM25NTIM	35.0	9.0	7.4	#4	25
ZM35NTIM	40.0	10.5	8.7	#2	35
ZM50NTIM	45.0	12.0	10.0	1/0	50
ZM70NTIM	50.0	14.5	12.0	2/0	70
ZM95NTIM	55.0	17.0	14.2	3/0	95
ZM120NTIM	60.0	19.0	15.6	4/0	120
ZM150NTIM	65.0	21.0	17.0	250-300MCM	150
ZM185NTIM	70.0	23.0	19.0	300-350MCM	185
ZM240NTIM	75.0	26.0	21.4	—	240
ZM300NTIM	80.0	30.0	25.0	—	300
ZM400NTIM	85.0	34.0	28.0	—	400
ZM500NTIM	100.0	38.0	31.0	—	500
ZM630NTIM	110.0	43.0	35.0	—	630

Insulated Male Disconnects

www.zlami.eu

Insulated Male Disconnects



0.5~1.5mm²(22~16)

I_{max}=10A

Item No.	Mema Tab (mm)	Thickness of material (mm)	Dimension				
			B (mm)	d φ (mm)	D φ (mm)	L (mm)	H (mm)
ZM1.25/110(8)IMD	0.8 × 2.8	0.8	2.8	1.70	4.3	17.7	10.0
ZM1.25/187(5)IMD	0.5 × 4.75	0.5	4.75	1.70	4.3	20.0	
ZM1.25/187(8)IMD	0.8 × 4.75	0.8	4.75	1.70	4.3	18.5	
ZM1.25/250IMD	0.8 × 6.35	0.4	6.35	1.70	4.3	21.0	

1.5~2.5mm²(16~14)

I_{max}=15A

Item No.	Mema Tab (mm)	Thickness of material (mm)	Dimension				
			B (mm)	d φ (mm)	D φ (mm)	L (mm)	H (mm)
ZM2/187(5)IMD	0.5 × 4.75	0.5	4.75	2.3	4.3	20.0	10.0
ZM2/187(8)IMD	0.8 × 4.75	0.8	4.75	2.3	4.3	18.5	
ZM2/250IMD	0.8 × 6.35	0.4	6.35	2.3	4.3	21.0	

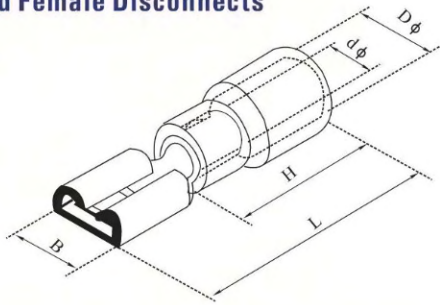
4~6mm²(12~10)

I_{max}=24A

Item No.	Mema Tab (mm)	Thickness of material (mm)	Dimension				
			B (mm)	d φ (mm)	D φ (mm)	L (mm)	H (mm)
ZM5.5/250IMD	0.8 × 6.35	0.4	6.35	3.4	5.7	25.0	14.0

Insulated Female Disconnects

Insulated Female Disconnects



0.5~1.5mm²(22~16)

I_{max}=10A

Item No.	Mema Tab (mm)	Thickness of material (mm)	Dimension				
			B (mm)	d φ (mm)	D φ (mm)	L (mm)	H (mm)
ZM1.25/110(5)IFD	0.5×2.8	0.3	3.8	1.70	3.80	19.0	10.0
ZM1.25/110(8)IFD	0.8×2.8	0.3	3.8	1.70	3.80	19.0	
ZM1.25/187(5)IFD	0.5×4.75	0.35	5.6	1.70	3.80	19.0	
ZM1.25/187(8)IFD	0.8×4.75	0.35	5.6	1.70	3.80	19.0	
ZM1.25/205IFD	0.5×5.2	0.35	6.5	1.70	3.80	20.0	
ZM1.25/250IFD	0.8×6.35	0.4	7.4	1.70	3.80	21.0	

1.5~2.5mm²(16~14)

I_{max}=15A

Item No.	Mema Tab (mm)	Thickness of material (mm)	Dimension				
			B (mm)	d φ (mm)	D φ (mm)	L (mm)	H (mm)
ZM2/110(5)IFD	0.5×2.8	0.3	3.8	2.3	4.3	19.0	10.0
ZM2/110(8)IFD	0.8×2.8	0.3	3.8	2.3	4.3	19.0	
ZM2/187(5)IFD	0.5×4.75	0.35	5.6	2.3	4.3	19.0	
ZM2/187(8)IFD	0.8×4.75	0.35	5.6	2.3	4.3	19.0	
ZM2/205IFD	0.5×5.2	0.35	6.5	2.3	4.3	20.0	
ZM2/250IFD	0.8×6.35	0.4	7.4	2.3	4.3	21.0	
ZM2/312IFD	0.8×8.0	0.4	9.0	2.3	4.3	23.0	

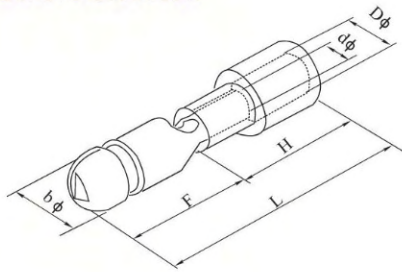
4~6mm²(12~10)

I_{max}=24A

Item No.	Mema Tab (mm)	Thickness of material (mm)	Dimension				
			B (mm)	d φ (mm)	D φ (mm)	L (mm)	H (mm)
ZM5.5/250IFD	0.5×6.35	0.4	7.4	3.4	5.7	25.0	14.0
ZM5.5/375IFD	1.2×9.4	0.5	10.9	3.4	5.7	29.6	

Insulated Bullet Disconnects

Insulated Bullet Disconnects



MALE



0.5~1.5mm²(22-16)

I_{max}=10A

Item NO.	Thickness of material (mm)	Dimension						Color
		b φ (mm)	F (mm)	D φ (mm)	d φ (mm)	H (mm)	L (mm)	
ZM1.25/156IBD	0.4	4.0	11.0	2.7	1.7	10.0	21.0	Red

1.5~2.5mm²(16~14)

I_{max}=15A

Item NO.	Thickness of material (mm)	Dimension						Color
		b φ (mm)	F (mm)	D φ (mm)	d φ (mm)	H (mm)	L (mm)	
ZM2/156IBD	0.4	4.0	16.0	2.7	1.7	10.0	21.0	blue
ZM2/195IBD	0.4	5.0	16.0	2.7	1.7	10.0	21.0	

4~6mm²(12~10)

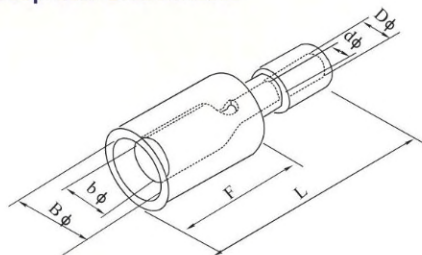
I_{max}=24A

Item NO.	Thickness of material (mm)	Dimension						Color
		b φ (mm)	F (mm)	D φ (mm)	d φ (mm)	H (mm)	L (mm)	
ZM5.5/195IBD	0.4	5.0	11.0	4.5	3.4	14.0	25.0	yellow

Insulated Receptacle Disconnects



Insulated Receptacle Disconnects



FEMALE



0.5~1.5mm²(22-16)

I_{max}=10A

Item NO.	Thickness of material (mm)	Dimension						Color
		b φ (mm)	F (mm)	D φ (mm)	d φ (mm)	H (mm)	L (mm)	
ZM1.25/156IRD	0.4	4.0	16.0	2.7	1.7	13.0	24.5	Red

1.5~2.5mm²(16~14)

I_{max}=15A

Item NO.	Thickness of material (mm)	Dimension						Color
		b φ (mm)	F (mm)	D φ (mm)	d φ (mm)	H (mm)	L (mm)	
ZM2/156IRD	0.4	4.0	6.3	3.3	2.3	14.0	24.5	blue
ZM2/195IRD	0.4	5.0	7.0	3.3	2.3	14.0	24.5	

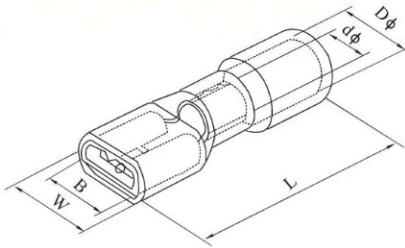
4~6mm²(112~10)

I_{max}=24A

Item NO.	Thickness of material (mm)	Dimension						Color
		b φ (mm)	F (mm)	D φ (mm)	d φ (mm)	H (mm)	L (mm)	
ZM5/195IRD	0.4	5.0	7.0	4.5	3.4	14.0	29.5	yellow

Fully Vinyl Insulated Disconnects

Fully Vinyl Insulated Disconnects



0.5~1.5mm²(22~16)

I_{max}=10A

Item NO.	Mema Tab (mm)	Dimension				
		W (mm)	B (mm)	D φ (mm)	d φ (mm)	L (mm)
ZM1.25/110(5)FVID	0.5 × 2.8	3.8	3.2	2.7	1.7	19.0
ZM1.25/110(8)FVID	0.8 × 2.8	3.8	3.2	2.7	1.7	19.0
ZM1.25/187(5)FVID	0.5 × 4.75	5.6	5.0	4.0	1.7	20.0
ZM1.25/187(8)FVID	0.8 × 4.75	5.6	5.0	4.0	1.7	20.0
ZM1.25/250FVID	0.8 × 6.35	7.4	6.6	4.0	1.7	21.5

1.5~2.5mm²(16~14)

I_{max}=15A

Item NO.	Mema Tab (mm)	Dimension				
		W (mm)	B (mm)	D φ (mm)	d φ (mm)	L (mm)
ZM2/187(5)FVID	0.5 × 4.75	5.6	5.0	4.5	2.3	20.0
ZM2/187(8)FVID	0.8 × 4.75	5.6	5.0	4.5	2.3	20.0
ZM2/250FVID	0.8 × 6.35	7.4	6.6	4.5	2.3	21.5

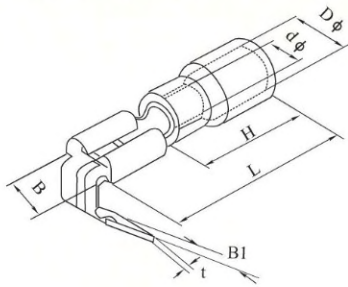
4~6mm²(12~10)

I_{max}=24A

Item NO.	Mema Tab (mm)	Dimension				
		W (mm)	B (mm)	D φ (mm)	d φ (mm)	L (mm)
ZM5.5/250FVID	0.8 × 6.35	7.4	6.6	5.7	3.4	25.5

Fully Vinyl Insulated Disconnects

Fully Vinyl Insulated Disconnects



0.5~1.5mm²(22~16)

I_{max}=10A

Item NO.	Mema Tab T(mm)	Dimension					
		B (mm)	B 1 (mm)	B (mm)	D φ (mm)	d φ (mm)	L (mm)
ZM1.25/250FVID(C)	0.8 × 6.35	7.4	6.3	10.0	3.8	1.7	21.5

1.5~2.5mm²(16~14)

I_{max}=15A

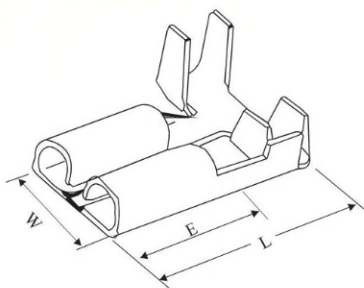
Item NO.	Mema Tab T(mm)	Dimension					
		B (mm)	B 1 (mm)	B (mm)	D φ (mm)	d φ (mm)	L (mm)
ZM2/250FVID(C)	0.8 × 6.35	7.4	6.3	10.0	4.3	2.3	21.5

4~6mm²(12~10)

I_{max}=24A

Item NO.	Mema Tab T(mm)	Dimension					
		B (mm)	B 1 (mm)	B (mm)	D φ (mm)	d φ (mm)	L (mm)
ZM5.5/250FVID(C)	0.8 × 6.35	7.4	6.3	14.0	5.7	3.4	25.0

6.3

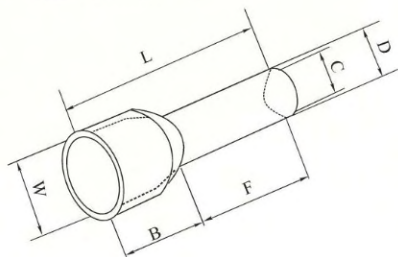


Item NO.	Metal	Wire Range	Dimension(mm)			Thickness
			W(mm)	L(mm)	E(mm)	
ZM6211DJ/D6.3B	BRASS	1.0~1.5	7.7	13.8	7.7	0.35

Insulated Cord End Terminals



Insulated Cord End Terminals

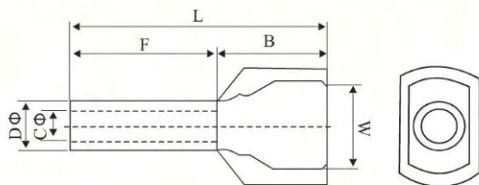


Item NO.	Dimension						Clnle Sq		Insulation Color
	F (mm)	L (mm)	W (mm)	B (mm)	D (mm)	C (mm)	A.W.G	mm ²	
ZM0506ICET	6.0	12.0	2.6	6.0	1.3	1.0	#22	0.5	Orange
ZM0508ICET	8.0	14.0							
ZM0510ICET	10.0	16.0							
ZM0512ICET	12.0	18.0							
ZM7506ICET	6.0	12.4	2.8	6.4	1.5	1.2	#20	0.75	White
ZM7508ICET	8.0	14.6							
ZM7510ICET	10.0	16.4							
ZM7512ICET	12.0	18.4							
ZM7518ICET	18.0	24.4	3.0	6.4	1.7	1.4	#18	1.0	Yellow
ZM1006ICET	6.0	12.4							
ZM1008ICET	8.0	14.6							
ZM1010ICET	10.0	16.4							
ZM1012ICET	12.0	18.4	3.5	6.4	2.0	1.7	#16	1.5	Red
ZM1508ICET	8.0	14.6							
ZM1510ICET	10.0	16.4							
ZM1518ICET	18.0	24.4							
ZM2508ICET	8.0	15.2	4.0	7.0	2.6	2.3	#14	2.5	Blue
ZM2512ICET	12.0	19.0							
ZM2518ICET	18.0	25.0							
ZM4009ICET	9.0	16.5	4.4	7.5	3.2	2.8	#12	4.0	Grey
ZM4012ICET	12.0	19.5							
ZM4018ICET	18.0	25.5							
ZM6012ICET	12.0	20.0	6.3	8.0	3.9	3.5	#10	6.0	Black
ZM6018ICET	18.0	26.0							
ZM10/12ICET	12.0	21.5	7.6	9.5	4.9	4.5	#7	10.0	Beige
ZM10/18ICET	18.0	27.5							
ZM16/12ICET	12.0	22.2	8.8	10.2	6.2	5.8	#5	16.0	Green
ZM16/18ICET	18.0	28.2							
ZM25/16ICET	16.0	29.0	11.2	13.0	7.9	7.5	#4	25.0	Brown
ZM25/22ICET	22.0	35.0							
ZM35/16ICET	16.0	30.0	12.7	14.0	8.7	8.3	#2	35.0	Beige
ZM35/25ICET	25.0	39.0							
ZM50/20ICET	20.0	36.0	15.3	16.0	10.9	10.3	#1	50.0	Olive
ZM50/25ICET	25.0	41.0							

Crewel Tube Pre-insulating Terminal

www.zlami.eu

Crewel Tube Pre-insulating Terminal

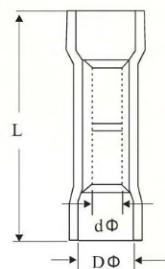


150°C Ui=300V

Item NO.	Conductor mm ²	Dimension(mm)						Color
		F	L	W	B	DΦ	CΦ	
ZM0508ICETD	2 × 0.5	8.0	14.5	5.0	6.5	1.8	1.5	White
ZM7508ICETD	2 × 0.75	8.0	14.7	5.5	6.7	2.1	1.8	Blue
ZM7510ICETD	2 × 0.75	10.0	16.07	5.5	6.7	2.1	1.8	Red
ZM1008ICETD	2 × 1.0	8.0	15.1	5.5	7.1	2.3	2.0	
ZM1010ICETD	2 × 1.0	10.0	17.1	5.5	7.1	2.3	2.0	Black
ZM1508ICETD	2 × 1.5	8.0	15.5	6.4	7.2	2.6	2.3	
ZM1512ICETD	2 × 1.5	12.0	19.5	6.4	7.5	2.6	2.3	Grey
ZM2510ICETD	2 × 2.5	10.0	18.5	8.0	8.5	3.3	2.9	
ZM2513ICETD	2 × 2.5	13.0	21.5	8.0	8.5	3.3	2.9	Oranage
ZM4012ICETD	2 × 4.0	12.0	23.1	8.8	11.1	4.2	3.8	
ZM6014ICETD	2 × 6.0	14.0	26.1	9.5	12.1	5.3	4.9	Green
ZM10/14ICETD	2 × 10.0	14.0	26.6	12.6	12.0	6.9	6.5	brown
ZM16/14ICETD	2 × 16.0	14.0	31.3	19.0	17.3	8.7	8.3	Beige

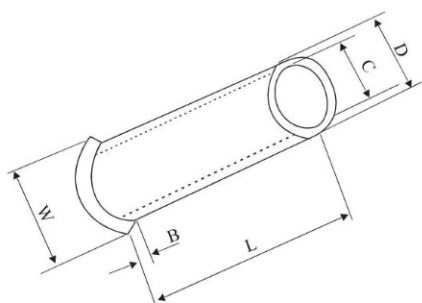
Long Full-Insulating Middle Joint(Nylon)

26-22 A.W.G:9A
 22-16A.W.G:19A
 16-14A.W.G:27A
 12-10A.W.G:48A
 105°C Ui=600V



Item NO.	Dimension(mm)			A.W.G mm ²	Color
	L	DΦ	dΦ		
ZM1.25LFIMJ	27.3	3.2	1.7	22-16 A.W.G 0.5-1.5mm ²	Red
ZM2LFIMJ	27.3	3.8	2.3	16-14 A.W.G 1.5-2.5mm ²	Blue
ZM5.5LFIMJ	27.3	5.3	3.4	12-10 A.W.G 4.0-6.0mm ²	Yellow

Cord End Terminals



Item NO.	dimension					Wire Range	
	L(mm)	D(mm)	C(mm)	B(mm)	W(mm)	A.W.G	mm ²
ZM0506CET	6.0	1.3	1.0	0.7	2.1	#22	0.5
ZM7506CET	6.0	1.5	1.2	0.7	2.5	#20	0.75
ZM1006CET	6.0	1.7	1.4	0.7	2.7	#18	1.0
ZM1010CET	10.0						
ZM1507CET	7.0	2.0	1.7	1.0	3.5	#16	1.5
ZM1510CET	10.0						
ZM2507CET	7.0	2.5	2.2	1.0	2.5	#14	2.5
ZM2512CET	12.0						
ZM4009CET	9.0	3.2	2.8	1.0	4.0	#12	4.0
ZM4012CET	12.0						
ZM6010CET	10.0	3.9	3.5	1.0	4.8	#10	6.0
ZM6012CET	12.0						
ZM6015CET	15.0						
ZM10/12CET	12.0	4.9	4.5	1.2	5.8	#7	10.0
ZM10/15CET	15.0						
ZM10/18CET	18.0						
ZM16/12CET	12.0	6.2	5.8	1.5	7.5	#5	16.0
ZM16/15CET	15.0						
ZM16/18CET	18.0						
ZM25/16CET	16.0	7.9	7.5	1.8	9.2	4	25
ZM25/22CET	22.0						
ZM35/16CET	16.0	8.7	8.3	2.0	10	2	35
ZM35/25CET	25.0						
ZM50/20CET	20.0	10.9	10.3	2.0	12.4	1	50
ZM50/25CET	25.0						

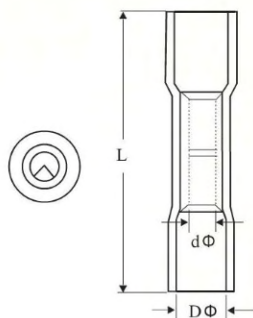
Heat Shrinking Middle Joint

www.zlami.eu

Heat Shrinking Middle Joint

4:1

-55°C-125°C。



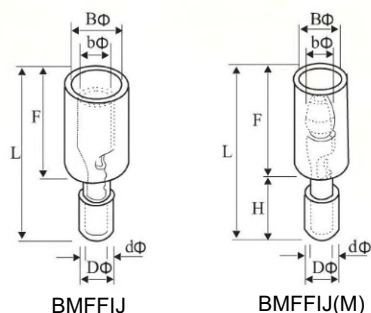
Item NO.	Dimension(mm)			A.W.G mm ²	Color
	L	DΦ	dΦ		
ZM-1HSMJ	37	6.0	1.7	22-18 A.W.G 0.5-1.0mm ²	Red
ZM-2HSMJ	37	7.5	2.3	16-14 A.W.G 1.5-2.5mm ²	Blue
ZM-5HSMJ	52	8.0	3.4	12-10 A.W.G 4.0-6.0mm ²	Yellow

Bullet-shaped Male and Female Full-Insulating Joint(Nylon)

22-16A.W.G:19A

16-14A.W.G:27A

105°C

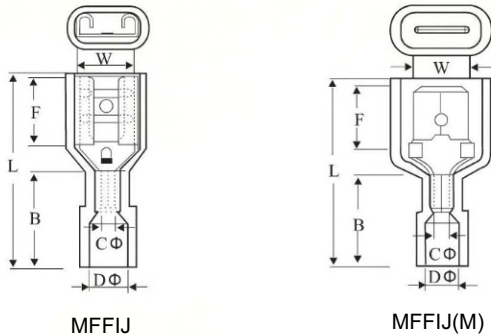


Item NO.	Dimension(mm)							A.W.G mm ²	Color
	BΦ	bΦ	DΦ	dΦ	L	F	H		
ZM1.25/156BMFFIJ	6.9	6.9	3.2	1.8	26.0	15.0	11.0	22-16A.W.G 0.5-1.5mm ²	Red
ZM1.25/156BMFFIJ(M)	7.4	3.9	3.2	1.8	27.5	16.5	11.0	22-16A.W.G 0.5-1.5mm ²	Red
ZM2/156BMFFIJ	6.9	4.0	3.9	2.4	26.0	15.5	11.0	16-14A.W.G 1.5-2.5mm ²	Blue
ZM2/156BMFFIJ(M)	7.4	4.0	3.9	2.4	27.5	16.5	11.0	16-14A.W.G 1.5-2.5mm ²	Blue

Male and Female Full-Insulating Joint(Nylon)



Male and Female Full-Insulating Joint(Nylon)



10A

Item No.	Mema Tab (mm)	Dimension(mm)							A.W.G mm ²	Color
		W	F	L	B	DΦ	CΦ	T		
ZM1.25/250MFFIJ	0.8 × 6.35	6.6	7.3	22.0	11.0	4.0	1.7	0.4	22-16A.W.G 0.5-1.5mm ²	Red
ZM1.25/250MFFIJ(M)		6.35	7.7	23.0						

15A

Item No.	Mema Tab (mm)	Dimension(mm)							A.W.G mm ²	Color
		W	F	L	B	DΦ	CΦ	T		
ZM2/250MFFIJ	0.8 × 6.35	6.6	7.3	22.0	11.0	4.0	2.3	0.4	16-14A.W.G 1.5-2.5mm ²	Blue
ZM2/250MFFIJ(M)		6.35	7.7	24.0						

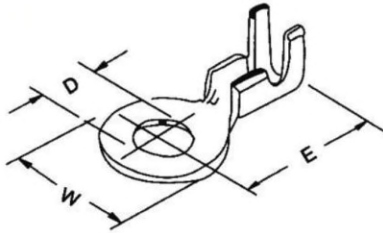
24A

Item No.	Mema Tab (mm)	Dimension(mm)							A.W.G mm ²	Color
		W	F	L	B	DΦ	CΦ	T		
ZM5.5/250MFFIJ	0.8 × 6.35	6.6	7.3	24.0	13.0	6.3	3.4	0.4	12-10A.W.G 4-6mm ²	Yellow
ZM5.5/250MFFIJ(M)		6.35	7.7	25.0						

Open Barrel Terminals(female&Male)



Ring Terminals



Item NO.	Metal	Wire Range	Dimension(mm)			Thickness
			D	W	E	
ZM-3Y/2.5	Brass	0.5-2.5	3.2	9.0	17.0	0.6
ZM-431DJ/3A		0.5-0.8	3.5	10.0	17.0	0.5
ZM-431DJ/5A		0.5-0.8	5.2	12.0	17.0	0.5
ZM-431DJ/6A		0.5-0.8	6.2	15.0	17.0	0.5
ZM-431DJ/8B		1.0-1.5	8.2	19.0	19.0	0.8
ZM-431DJ/10B		1.0-1.5	10.5			0.8

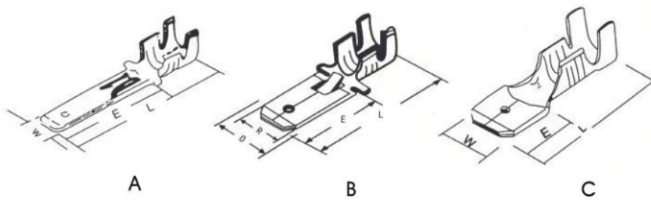


Fig	Item NO.	Metal	Wire Range	Dimension(mm)				Thickness
				D	W	L	E	
A	ZM-611DJ-2.8/0.5B	Brass	1.0-1.5	/	2.8	21.0	12.0	0.5
B	ZM-611DJ/6.3A		0.5-0.8	7.9	6.3	25.0	13.8	0.4
B	ZM-611DJ/6.3B		1.0-1.5	7.9	6.3	25.0	13.8	0.4
B	ZM-612DJ/6.3C		2.0-2.5	7.9	6.3	25.0	13.8	0.4
C	ZM-617DJ/6.3B		1.0-1.5	/	6.3	19.2	/	0.4

Open Barrel Terminals(female & Male)

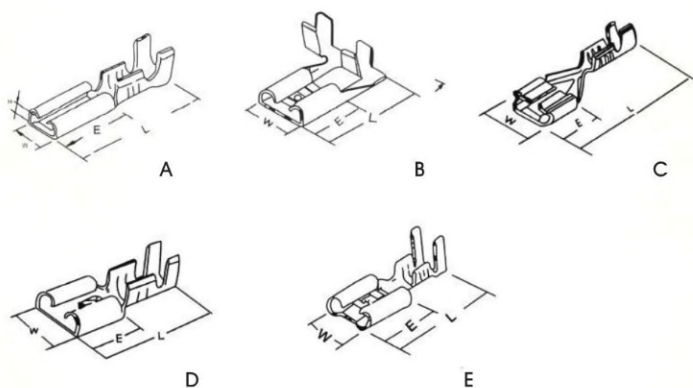


Fig	Item NO.	Metal	Wire Range	Dimension(mm)			Thickness
				W	L	E	
A	ZM-621DJ-E2.8/0.5B	Brass	1.0-1.5	4.1	16.0	6.6	0.3
A	ZM-621DJ-D2.8/0.5A		0.5-0.8	3.7	15.1	6.3	0.25
A	ZM-621DJ-E4.8/0.5A		0.5-0.8	6.0	13.8		0.3
B	ZM-625DJ-4.8/0.8A		0.5-0.8	6.4	12.0	6.2	0.4
C	ZM-621DJ/5A		0.5-0.8	5.2	17	5.5	0.3
C	ZM-621DJ/5B		1.0-1.5	5.2	17	5.5	0.3
D	ZM-622DJ/A6.3B		1.0-1.5	7.7	18.5	7.5	0.4
E	ZM-622DJ/D6.3B		1.0-1.5	7.7	17.5	7.5	0.4

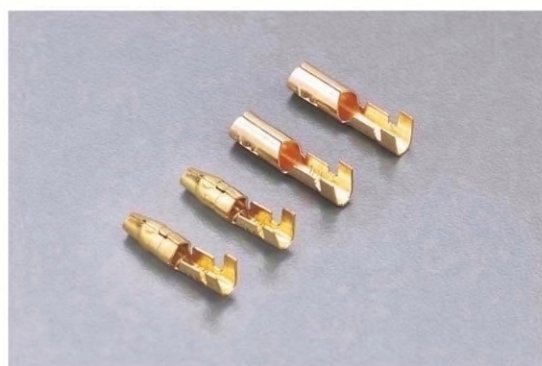
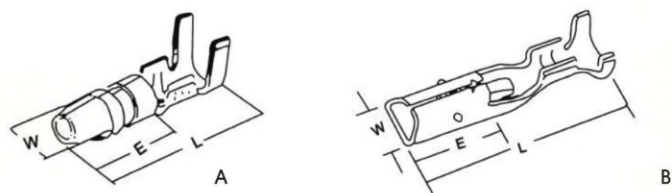


FIG	Item NO.	Metal	Wire Range	Dimension(mm)					Thickness
				D	H	W	L	E	
A	ZM-211DJ/3.5B	Brass	1.0-1.5			3.5	15.0		0.5
A	ZM-211DJ/4B		1.0-1.5			4.0	16		0.5
B	ZM-221DJ/2.3B		1.0-1.5			3.9	19.0	7.4	0.3
B	ZM-221DJ/3.5B		1.0-1.5			3.3	17.6	6.5	0.3
B	ZM-221DJ/4B		1.0-1.5			3.8	17.6	6.5	0.4

ZLM-30J



ZLA  MI

Suitable for pre-insulation terminal and full insulation mediate connector
Cable Range:0.5-6mm²



ZLM-03C



ZLA  MI

Suitable for pre-insulation terminal and full insulation mediate connector
Cable Range:0.5-6mm²



ZLM-0725



ZLA  MI

Suitable for pre-insulation terminal and full insulation mediate connector
Cable Range:0.5-2.5mm²



ZLM-02C



ZLA  MI

Suitable for pre-insulation terminal and full insulation mediate connector
Cable Range:0.25-2.5mm²



ZLM-0325



ZLA  MI

For non-insulated terminal
Cable Range:0.5-2.5mm²



ZLM-02



ZLA  MI

For non-insulated terminal
Cable Range:0.25-2.5mm²



ZLM-101



ZLA  MI

For non-insulated terminal and wire joints
Cable Range:1.0-10mm²



ZLM-103



ZLA  MI

For wire joints
Cable Range:0.5-6mm²



Tools

ZLM-03B



For open barrel terminals (female & male)
Cable Range: 1.5–6mm²



ZLM-11011



For open barrel terminals
(female & male)



ZLM-04WF



Suitable for insulation cord end terminals
Cable Range: 1.0–6mm²



ZLM-864 0.08–6mm²

ZLM-866 0.25–6mm²



Suitable for insulation cord end terminals



ZLM-05WF 0.5–6mm²

ZLM-06WF 0.25–6mm²

ZLM-16WF 6–6mm²



Suitable for insulation cord end terminals



ZLM-05S 0.5–4mm²

ZLM-16S 6–16mm²



Suitable for insulation cord end terminals



ZLM-26TW



Suitable for tube type pre-insulation terminal
Cable Range: 0.5–6mm²



ZLM-35WF



Suitable for tube type pre-insulation terminal
Cable Range: 10–35mm²



ZLM-1.25/8 1.25–8mm²
 ZLM-5.5/14 5.5–14mm²
 ZLM-1.25/16 1.25–16mm²



Suitable for non-insulated terminal



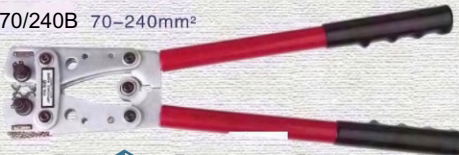
ZLM-5.5/25 5.5–25mm²
 ZLM-5.5/38 5.5–38mm²



Suitable for non-insulated terminal



ZLM-6/50B 6–50mm²
 ZLM-10/120B 10–120mm²
 ZLM-25/150B 25–150mm²
 ZLM-70/240B 70–240mm²



Suitable for copper tube terminals /cable lugs



ZLM-150CT



Suitable for copper tube terminals/cable lugs
 Cable Range: 16–150mm²

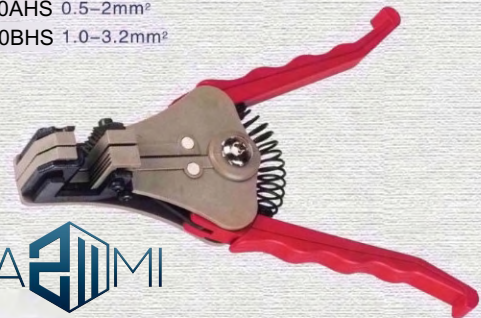


ZLM-8/16HS 8–16mm²
 ZLM-0.9/6HS 0.9–6mm²
 ZLM-0.2/1.25HS 0.2–1.25mm²
 ZLM-0.25/0.65HS 0.25–0.65mm²



Suitable for wire-peeling wire cutting and wire combining terminal

ZLM-700AHS 0.5–2mm²
 ZLM-700BHS 1.0–3.2mm²



Suitable for peeling a wire

ZLM-125LK Max 125mm²
 ZLM-250LK Max 250mm²
 ZLM-500LK Max 500mm²



Suitable for cutting copper and aluminum cable

ZLM-325AHS Max 240mm²
 ZLM-520AHS Max 400mm²

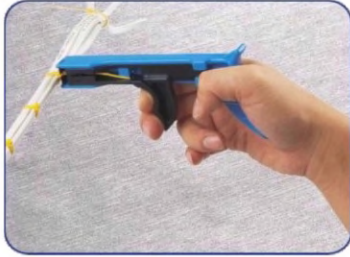


Suitable for cable pincer

Cable Ties Tools

ZLM-100TG

For tensloning and cut-off cable tie from width 2.4mm to 4.8mm
FOR " DIY " ONLY



ZLM-600A

Suitable for fast bind wire and cable automatic cut-and -bind left part
Deviding cable tie 50~350mm,its width 4.8mm
Weight:0.30kg L:165mm Material: Metal



ZLM-500

Suitable for fast bind wire and cable automatic cut-and -bind left part
Deviding cable tie 50~350mm,its width 4.8mm
Material: Plastic



ZLM-519

Suitable for fast bind wire and cable automatic cut-and-bind left part
Deviding cable tie 50~500mm,its width 9.0mm
Weight:0.26kg L:195mm Material: Metal



ZLM-001LQA

Suitable for stainless steel cable ties,fast tighten cable ties and
cut off the left part of cable tie, adjust the pressure for pack



